

## Product datasheet for **AP53654PU-N**

### **RGS8 (N-term) Rabbit Polyclonal Antibody**

#### **Product data:**

Product Type:	Primary Antibodies
Applications:	WB
Recommended Dilution:	<b>ELISA:</b> 1/1000. <b>Western Blot:</b> 1/100-1/500.
Reactivity:	Human
Host:	Rabbit
Isotype:	Ig
Clonality:	Polyclonal
Immunogen:	KLH conjugated synthetic peptide between 13-43 amino acids from the N-terminal region of Human RGS8.
Specificity:	This antibody recognizes Human RGS8 (N-term).
Formulation:	PBS State: Aff - Purified State: Liquid purified Ig fraction Preservative: 0.09% Sodium Azide
Concentration:	lot specific
Purification:	Affinity Chromatography on Protein A
Conjugation:	Unconjugated
Storage:	Store undiluted at 2-8°C for one month or (in aliquots) at -20°C for longer. Avoid repeated freezing and thawing.
Stability:	Shelf life: one year from despatch.
Gene Name:	regulator of G-protein signaling 8
Database Link:	<a href="#">Entrez Gene 85397 Human P5771</a>



[View online »](#)

**Background:**

RGS8 is a member of the regulator of G protein signaling (RGS) family and encodes a protein with a single RGS domain. Regulator of G protein signaling (RGS) proteins are regulatory and structural components of G protein-coupled receptor complexes. They accelerate transit through the cycle of GTP binding and hydrolysis to GDP, thereby terminating signal transduction, but paradoxically, also accelerate receptor-stimulated activation.

**Synonyms:**

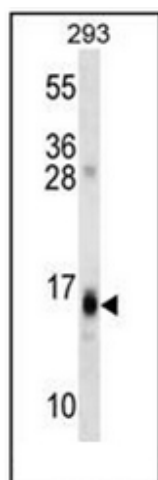
MGC119067; MGC119068; MGC119069; OTTHUMP00000033156

**Note:**

**Molecular Weight:** 20917 Da

**Protein Families:**

Druggable Genome

**Product images:**

Western blot analysis of RGS8 Antibody (N-term) in 293 cell line lysates (35ug/lane). This demonstrates the RGS8 antibody detected the RGS8 protein (arrow).