

Product datasheet for **AP53653PU-N**

RGS7 (C-term) Rabbit Polyclonal Antibody

Product data:

Product Type:	Primary Antibodies
Applications:	IHC, WB
Recommended Dilution:	ELISA: 1/1000. Western Blot: 1/100-1/500. Immunohistochemistry on Paraffin Sections: 1/10-1/50.
Reactivity:	Human
Host:	Rabbit
Isotype:	Ig
Clonality:	Polyclonal
Immunogen:	KLH conjugated synthetic peptide between 447-477 amino acids from the C-terminal region of Human RGS7.
Specificity:	This antibody recognizes Human RGS7 (C-term).
Formulation:	PBS State: Aff - Purified State: Liquid purified Ig fraction Preservative: 0.09% Sodium Azide
Concentration:	lot specific
Purification:	Affinity Chromatography on Protein A
Conjugation:	Unconjugated
Storage:	Store undiluted at 2-8°C for one month or (in aliquots) at -20°C for longer. Avoid repeated freezing and thawing.
Stability:	Shelf life: one year from despatch.
Gene Name:	regulator of G-protein signaling 7
Database Link:	Entrez Gene 6000 Human P49802



[View online »](#)

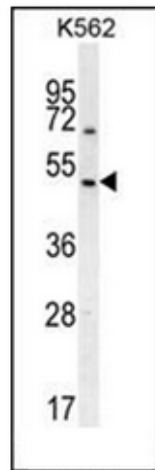
Background: RGS7 inhibits signal transduction by increasing the GTPase activity of G protein alpha subunits thereby driving them into their inactive GDP-bound form. Activity on G(o)-alpha is specifically enhanced by the RGS6/GNG5 dimer. May play a role in synaptic vesicle exocytosis. May play important role in the rapid regulation of neuronal excitability and the cellular responses to short-lived stimulations (By similarity).

Synonyms: OTTHUMP00000037994

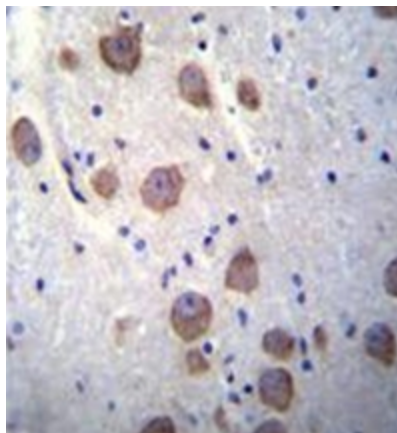
Note: **Molecular Weight:** 57668 Da

Protein Families: Druggable Genome

Product images:



Western blot analysis of RGS7 Antibody (C-term) in K562 cell line lysates (35ug/lane). This demonstrates the RGS7 antibody detected the RGS7 protein (arrow).



Formalin fixed, paraffin embedded human brain tissue stained with RGS7 Antibody (C-term) followed by peroxidase conjugation of the secondary antibody and DAB staining. This data demonstrates the use of RGS7 Antibody (C-term) for immunohistochemistry. Clinical relevance has not been evaluated.