

## Product datasheet for **AP53652PU-N**

### **RGS5 (N-term) Rabbit Polyclonal Antibody**

#### **Product data:**

Product Type:	Primary Antibodies
Applications:	WB
Recommended Dilution:	<b>ELISA:</b> 1/1000. <b>Western Blot:</b> 1/100-1/500.
Reactivity:	Human
Host:	Rabbit
Isotype:	Ig
Clonality:	Polyclonal
Immunogen:	KLH conjugated synthetic peptide between 23-53 amino acids from the N-terminal region of Human RGS5.
Specificity:	This antibody recognizes Human RGS5 (N-term).
Formulation:	PBS State: Aff - Purified State: Liquid purified Ig fraction Preservative: 0.09% Sodium Azide
Concentration:	lot specific
Purification:	Affinity Chromatography on protein A
Conjugation:	Unconjugated
Storage:	Store undiluted at 2-8°C for one month or (in aliquots) at -20°C for longer. Avoid repeated freezing and thawing.
Stability:	Shelf life: one year from despatch.
Gene Name:	regulator of G-protein signaling 5
Database Link:	<a href="#">Entrez Gene 8490 Human</a> <a href="#">O15539</a>



[View online »](#)

**Background:**

This gene encodes a member of the regulators of G protein signaling (RGS) family. The RGS proteins are signal transduction molecules which are involved in the regulation of heterotrimeric G proteins by acting as GTPase activators. This gene is a hypoxia-inducible factor-1 dependent, hypoxia-induced gene which is involved in the induction of endothelial apoptosis. This gene is also one of three genes on chromosome 1q contributing to elevated blood pressure. Alternatively spliced transcript variants encoding different isoforms have been identified.

**Synonyms:**

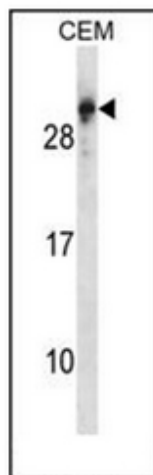
MST092; MST106; MST129; MSTP032; MSTP092; MSTP106; MSTP129

**Note:**

**Molecular Weight:** 20946 Da

**Protein Families:**

Druggable Genome

**Product images:**

Western blot analysis of RGS5 Antibody (N-term) in CEM cell line lysates (35ug/lane). This demonstrates the RGS5 antibody detected the RGS5 protein (arrow).