

Product datasheet for **AP53648PU-N**

RGR (Center) Rabbit Polyclonal Antibody

Product data:

Product Type:	Primary Antibodies
Applications:	FC, IHC, WB
Recommended Dilution:	ELISA: 1/1000. Western Blot: 1/100-1/500. Flow Cytometry: 1/10-1/50. Immunohistochemistry on Paraffin Sections: 1/50-1/100.
Reactivity:	Human
Host:	Rabbit
Isotype:	Ig
Clonality:	Polyclonal
Immunogen:	KLH conjugated synthetic peptide between 262~291 amino acids from the Central region of Human RGR.
Specificity:	This antibody recognizes Human RGR (Center).
Formulation:	PBS State: Aff - Purified State: Liquid purified Ig fraction Preservative: 0.09% Sodium Azide
Concentration:	lot specific
Purification:	Affinity Chromatography on Protein A
Conjugation:	Unconjugated
Storage:	Store undiluted at 2-8°C for one month or (in aliquots) at -20°C for longer. Avoid repeated freezing and thawing.
Stability:	Shelf life: one year from despatch.
Gene Name:	retinal G protein coupled receptor
Database Link:	Entrez Gene 5995 Human P47804



[View online »](#)

Background:

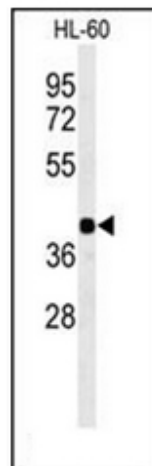
This gene encodes a putative retinal G-protein coupled receptor. The gene is a member of the opsin subfamily of the 7 transmembrane, G-protein coupled receptor 1 family. Like other opsins which bind retinaldehyde, it contains a conserved lysine residue in the seventh transmembrane domain. The protein acts as a photoisomerase to catalyze the conversion of all-trans-retinal to 11-cis-retinal. The reverse isomerization occurs with rhodopsin in retinal photoreceptor cells. The protein is exclusively expressed in tissue adjacent to retinal photoreceptor cells, the retinal pigment epithelium and Mueller cells. This gene may be associated with autosomal recessive and autosomal dominant retinitis pigmentosa (arRP and adRP, respectively).

Synonyms:

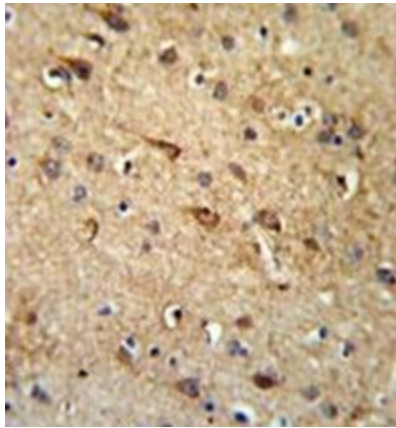
RPE-retinal G protein-coupled receptor

Note:**Molecular Weight:** 31874 Da**Protein Families:**

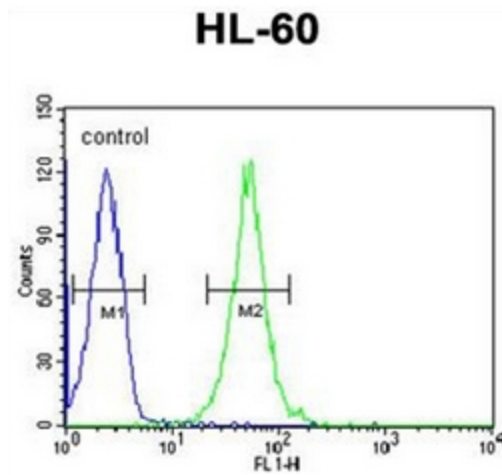
Druggable Genome, GPCR, Transmembrane

Product images:

Western blot analysis of RGR Antibody in HL-60 cell line lysates (35ug/lane). RGR (arrow) was detected using the purified Pab.



Formalin fixed, paraffin embedded brain tissue stained with RGR Antibody followed by peroxidase conjugation of the secondary antibody and DAB staining. This data demonstrates the use of the RGR Antibody (Center) for immunohistochemistry. Clinical relevance has not been evaluated.



Flow cytometric analysis of HL-60 cells using RGR Antibody (right histogram) compared to a negative control cell (left histogram). FITC-conjugated goat-anti-rabbit secondary antibodies were used for the analysis.