

Product datasheet for **AP53644PU-N**

RFX3 (C-term) Rabbit Polyclonal Antibody

Product data:

Product Type:	Primary Antibodies
Applications:	WB
Recommended Dilution:	ELISA: 1/1,000. Western Blot 1/100-1/500.
Reactivity:	Human
Host:	Rabbit
Isotype:	Ig
Clonality:	Polyclonal
Immunogen:	KLH conjugated synthetic peptide between 660-690 amino acids from the C-terminal region of Human RFX3
Specificity:	This antibody recognizes Human RFX3 (C-term).
Formulation:	PBS containing 0.09% (W/V) Sodium Azide as preservative State: Aff - Purified State: Liquid purified Ig fraction
Concentration:	lot specific
Purification:	Protein A column, followed by peptide affinity purification
Conjugation:	Unconjugated
Storage:	Store undiluted at 2-8°C for one month or (in aliquots) at -20°C for longer. Avoid repeated freezing and thawing.
Stability:	Shelf life: one year from despatch.
Gene Name:	regulatory factor X3
Database Link:	Entrez Gene 5991 Human P48380



[View online »](#)

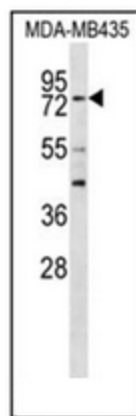
Background: This gene is a member of the regulatory factor X gene family, which encodes transcription factors that contain a highly-conserved winged helix DNA binding domain. The protein encoded by this gene is structurally related to regulatory factors X1, X2, X4, and X5. It is a transcriptional activator that can bind DNA as a monomer or as a heterodimer with other RFX family members. Two transcript variants encoding different isoforms have been described for this gene, and at least one of the variants utilizes alternative polyadenylation signals.

Synonyms: Regulatory factor X 3

Note: **Molecular Weight:** 83530 Da

Protein Families: Transcription Factors

Product images:



Western blot analysis of RFX3 Antibody (C-term) in MDA-MB435 cell line lysates (35ug/lane). This demonstrates the RFX3 antibody detected the RFX3 protein (arrow).