

Product datasheet for **AP53640PU-N**

RFT1 (C-term) Rabbit Polyclonal Antibody

Product data:

Product Type:	Primary Antibodies
Applications:	IHC, WB
Recommended Dilution:	ELISA: 1/1000. Western Blot: 1/100-1/500. Immunohistochemistry on Paraffin Sections: 1/50-1/100.
Reactivity:	Human
Host:	Rabbit
Isotype:	Ig
Clonality:	Polyclonal
Immunogen:	KLH conjugated synthetic peptide between 520-549 amino acids from the C-terminal region of Human RFT1
Specificity:	This antibody recognizes Human RFT1 (C-term).
Formulation:	PBS State: Aff - Purified State: Liquid purified Ig fraction Preservative: 0.09% Sodium Azide
Concentration:	lot specific
Purification:	Affinity Chromatography on Protein A
Conjugation:	Unconjugated
Storage:	Store undiluted at 2-8°C for one month or (in aliquots) at -20°C for longer. Avoid repeated freezing and thawing.
Stability:	Shelf life: one year from despatch.
Gene Name:	RFT1 homolog
Database Link:	Entrez Gene 91869 Human Q96AA3
Synonyms:	Protein RFT1 homolog
Note:	Molecular Weight: 60335 Da

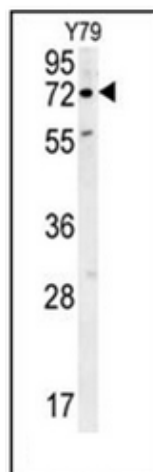


[View online »](#)

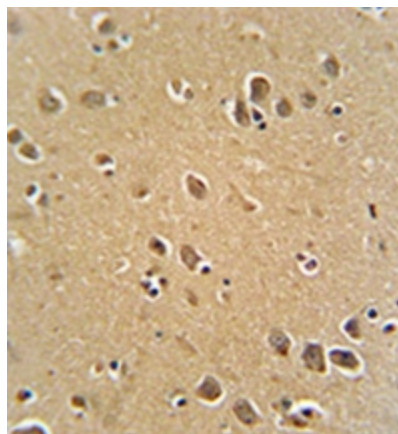
Protein Families: Transmembrane

Protein Pathways: N-Glycan biosynthesis

Product images:



Western blot analysis of RFT1 Antibody (C-term) in Y79 cell line lysates (35ug/lane). This demonstrates the RFT1 antibody detected the RFT1 protein (arrow).



Formalin fixed, paraffin embedded human brain tissue stained with RFT1 Antibody (C-term) followed by peroxidase conjugation of the secondary antibody and DAB staining.