

Product datasheet for **AP53637PU-N**

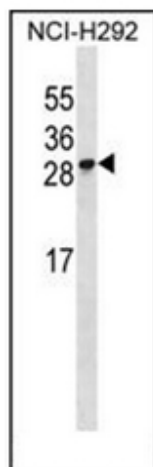
RFESD (Center) Rabbit Polyclonal Antibody

Product data:

Product Type:	Primary Antibodies
Applications:	WB
Recommended Dilution:	ELISA: 1/1000. Western Blot: 1/100-1/500.
Reactivity:	Human
Host:	Rabbit
Isotype:	Ig
Clonality:	Polyclonal
Immunogen:	conjugated synthetic peptide between 77-107 amino acids from the Central region of Human RFESD.
Specificity:	This antibody recognizes Human RFESD (Center).
Formulation:	PBS State: Aff - Purified State: Liquid purified Ig fraction Preservative: 0.09% Sodium Azide
Concentration:	lot specific
Purification:	Affinity Chromatography on Protein A
Conjugation:	Unconjugated
Storage:	Store undiluted at 2-8°C for one month or (in aliquots) at -20°C for longer. Avoid repeated freezing and thawing.
Stability:	Shelf life: one year from despatch.
Gene Name:	Rieske Fe-S domain containing
Database Link:	Entrez Gene 317671 Human Q8TAC1
Background:	RFESD contains 1 Rieske domain. The specific function of this protein remains unknown
Synonyms:	Rieske domain-containing protein
Note:	Molecular Weight: 17762 Da



[View online »](#)

Product images:

Western blot analysis of RFESD Antibody in NCI-H292 cell line lysates (35ug/lane). This demonstrates the RFESD antibody detected the RFESD protein (arrow).