

## Product datasheet for **AP53634PU-N**

### **RERE (N-term) Rabbit Polyclonal Antibody**

#### **Product data:**

|                       |  |
|-----------------------|--|
| Product Type:         | Primary Antibodies   |
| Applications:         | FC, IHC, WB  |
| Recommended Dilution: | <b>ELISA:</b> 1/1000.<br><b>Western Blot:</b> 1/100-1/500.<br><b>Flow Cytometry:</b> 1/10-1/50.<br><b>Immunohistochemistry on Paraffin Sections:</b> 1/50-1/100. |
| Reactivity:           | Human  |
| Host:                 | Rabbit   |
| Isotype:              | Ig   |
| Clonality:            | Polyclonal   |
| Immunogen:            | KLH conjugated synthetic peptide between 389~418 amino acids from the N-terminal region of Human RERE.   |
| Specificity:          | This antibody recognizes Human RERE (N-term).  |
| Formulation:          | PBS<br>State: Aff - Purified<br>State: Liquid purified Ig fraction<br>Preservative: 0.09% Sodium Azide   |
| Concentration:        | lot specific   |
| Purification:         | Affinity Chromatography on Protein A   |
| Conjugation:          | Unconjugated   |
| Storage:              | Store undiluted at 2-8°C for one month or (in aliquots) at -20°C for longer.<br>Avoid repeated freezing and thawing.   |
| Stability:            | Shelf life: one year from despatch.  |
| Gene Name:            | arginine-glutamic acid dipeptide repeats   |
| Database Link:        | <a href="#">Entrez Gene 473 Human</a><br><a href="#">Q9P2R6</a>  |



[View online »](#)

**Background:**

RERE encodes a member of the atrophin family of arginine-glutamic acid (RE) dipeptide repeat-containing proteins. The encoded protein co-localizes with a transcription factor in the nucleus, and its overexpression triggers apoptosis. A similar protein in mouse associates with histone deacetylase and is thought to function as a transcriptional co-repressor during embryonic development.

**Synonyms:**

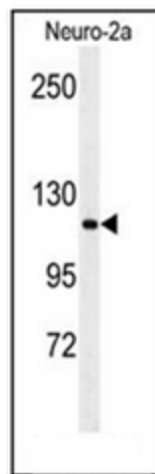
ARG, ARP, ATN1L, KIAA0458, Atrophin-1-related protein, Atrophin-1-like protein

**Note:**

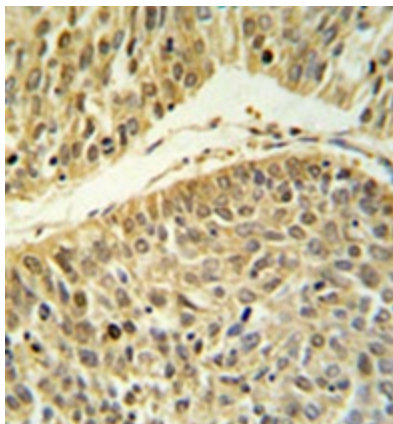
**Molecular Weight:** 172424 Da (Isoform 2.;109048 Da) Da

**Protein Families:**

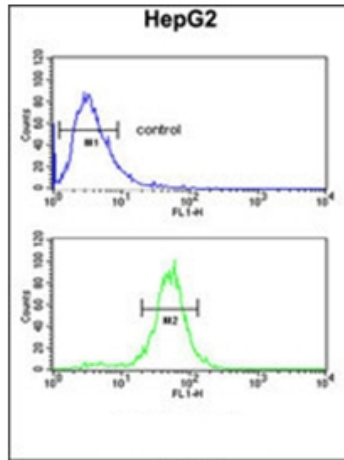
Transcription Factors

**Product images:**

Western blot analysis of RERE Antibody (N-term) in Neuro-2a cell line lysates (35ug/lane). RERE (arrow) was detected using the purified Pab.



Formalin fixed paraffin embedded lung carcinoma stained with RERE Antibody (N-term) followed by peroxidase conjugation of the secondary antibody and DAB staining. This data demonstrates the use of the RERE Antibody (N-term) for immunohistochemistry. Clinical relevance has not been evaluated.



Flow cytometric analysis of HepG2 cells using RERE Antibody (N-term) (bottom histogram) compared to a negative control cell (top histogram). FITC-conjugated goat-anti-rabbit secondary antibodies were used for the analysis.