

Product datasheet for **AP53630PU-N**

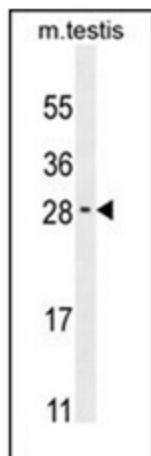
RELL2 (Center) Rabbit Polyclonal Antibody

Product data:

Product Type:	Primary Antibodies
Applications:	WB
Recommended Dilution:	ELISA: 1/1000. Western Blot: 1/100-1/500.
Reactivity:	Human, Mouse
Host:	Rabbit
Isotype:	Ig
Clonality:	Polyclonal
Immunogen:	KLH conjugated synthetic peptide between 139-168 amino acids from the Central region of Human RELL2.
Specificity:	This antibody recognizes Human and Mouse RELL2 (Center).
Formulation:	PBS State: Aff - Purified State: Liquid purified Ig fraction Preservative: 0.09% Sodium Azide
Concentration:	lot specific
Purification:	Affinity Chromatography on Protein A
Conjugation:	Unconjugated
Storage:	Store undiluted at 2-8°C for one month or (in aliquots) at -20°C for longer. Avoid repeated freezing and thawing.
Stability:	Shelf life: one year from despatch.
Gene Name:	RELT like 2
Database Link:	Entrez Gene 285613 Human Q8NC24
Synonyms:	RELT-like protein 2, C5orf16
Note:	Molecular Weight: 32405 Da
Protein Families:	Transmembrane



[View online »](#)

Product images:

Western blot analysis of RELL2 Antibody (Center) in Mouse testis tissue lysates (35ug/lane). This demonstrates the RELL2 antibody detected the RELL2 protein (arrow).