

## Product datasheet for **AP53629PU-N**

### REG3A (N-term) Rabbit Polyclonal Antibody

#### Product data:

Product Type:	Primary Antibodies
Applications:	FC, WB
Recommended Dilution:	<b>Western Blot:</b> ~1/1000. <b>Flow Cytometry:</b> 1/10-/50.
Reactivity:	Human
Host:	Rabbit
Isotype:	Ig
Clonality:	Polyclonal
Immunogen:	KLH conjugated synthetic peptide between 12-39 amino acids from the N-terminal region of Human REG3A.
Specificity:	This antibody recognizes Human REG3A (N-term).
Formulation:	PBS State: Aff - Purified State: Liquid purified Ig fraction Preservative: 0.09% Sodium Azide
Concentration:	lot specific
Purification:	Peptide Affinity Chromatography on Protein A
Conjugation:	Unconjugated
Storage:	Store undiluted at 2-8°C for one month or (in aliquots) at -20°C for longer. Avoid repeated freezing and thawing.
Stability:	Shelf life: one year from despatch.
Gene Name:	regenerating family member 3 alpha
Database Link:	<a href="#">Entrez Gene 5068 Human Q06141</a>



[View online »](#)

**Background:**

REG3A encodes a pancreatic secretory protein that may be involved in cell proliferation or differentiation. It has similarity to the C-type lectin superfamily. The enhanced expression of this protein is observed during pancreatic inflammation and liver carcinogenesis.

**Function:** Bactericidal C-type lectin which acts exclusively against Gram-positive bacteria and mediates bacterial killing by binding to surface-exposed carbohydrate moieties of peptidoglycan. Regulates keratinocyte proliferation and differentiation after skin injury via activation of EXTL3-PI3K-AKT signaling pathway.

**Tissue Location:** Highly expressed in epidermal keratinocytes of psoriasis patients (at protein level). Constitutively expressed in intestine. Low expression is found in healthy pancreas Overexpressed during the acute phase of pancreatitis and in some patients with chronic pancreatitis.

**Synonyms:**

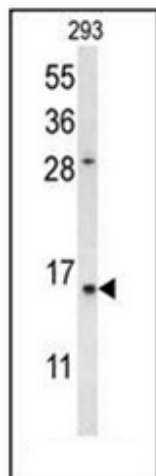
REG-3-alpha, Reg III-alpha, HIP, PAP, PAP1, Human proislet peptide, Pancreatitis-associated protein 1

**Note:**

**Molecular Weight:** 19395 Da

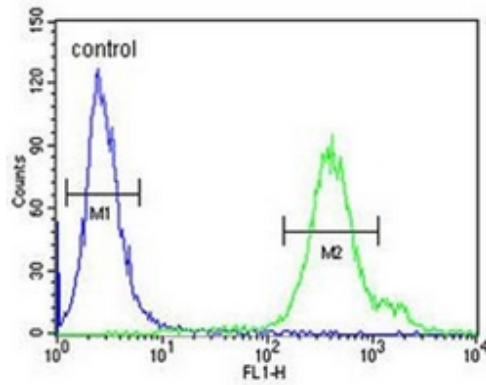
**Protein Families:**

Druggable Genome, Secreted Protein

**Product images:**

Western blot analysis of REG3A Antibody (N-term) in 293 cell line lysates (35ug/lane). REG3A (arrow) was detected using the purified Pab.

293



Flow cytometric analysis of 293 cells using REG3A Antibody (N-term) (right histogram) compared to a negative control cell (left histogram). FITC-conjugated goat-anti-rabbit secondary antibodies were used for the analysis.