

Product datasheet for **AP53628PU-N**

REEP4 (C-term) Rabbit Polyclonal Antibody

Product data:

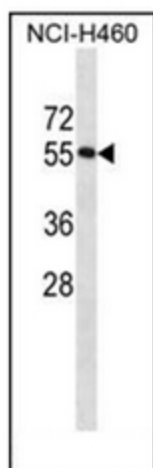
Product Type:	Primary Antibodies
Applications:	WB
Recommended Dilution:	ELISA: 1/1000. Western Blot: 1/100-1/500.
Reactivity:	Human, Mouse
Host:	Rabbit
Isotype:	Ig
Clonality:	Polyclonal
Immunogen:	KLH conjugated synthetic peptide between 228-257 amino acids from the C-terminal region of Human REEP4.
Specificity:	This antibody recognizes Human REEP4 (C-term).
Formulation:	PBS State: Aff - Purified State: Liquid purified Ig fraction Preservative: 0.09% Sodium Azide
Concentration:	lot specific
Purification:	Affinity Chromatography on Protein A
Conjugation:	Unconjugated
Storage:	Store undiluted at 2-8°C for one month or (in aliquots) at -20°C for longer. Avoid repeated freezing and thawing.
Stability:	Shelf life: one year from despatch.
Gene Name:	receptor accessory protein 4
Database Link:	Entrez Gene 72549 Mouse Entrez Gene 80346 Human Q9H6H4
Background:	May enhance the cell surface expression of odorant receptors (By similarity).
Synonyms:	C8orf20
Note:	Molecular Weight: 29395 Da



[View online »](#)

Protein Families: Druggable Genome, Transmembrane

Product images:



Western blot analysis of REEP4 Antibody (C-term) in Mouse bladder tissue lysates (35ug/lane). This demonstrates the REEP4 antibody detected the REEP4 protein (arrow).