

## Product datasheet for **AP53626PU-N**

### RECK (Center) Rabbit Polyclonal Antibody

#### Product data:

Product Type:	Primary Antibodies
Applications:	FC, IHC, WB
Recommended Dilution:	<b>ELISA:</b> 1/1000. <b>Western Blot:</b> 1/100-1/500. <b>Flow Cytometry:</b> 1/10-/50. <b>Immunohistochemistry on Paraffin Sections:</b> 1/50-1/100.
Reactivity:	Human
Host:	Rabbit
Isotype:	Ig
Clonality:	Polyclonal
Immunogen:	KLH conjugated synthetic peptide between 436~465 amino acids from the Center region of Human RECK.
Specificity:	This antibody recognizes Human RECK / ST15 (Center).
Formulation:	PBS State: Aff - Purified State: Liquid purified Ig fraction Preservative: 0.09% Sodium Azide
Concentration:	lot specific
Purification:	Affinity Chromatography on Protein A
Conjugation:	Unconjugated
Storage:	Store undiluted at 2-8°C for one month or (in aliquots) at -20°C for longer. Avoid repeated freezing and thawing.
Stability:	Shelf life: one year from despatch.
Gene Name:	reversion inducing cysteine rich protein with kazal motifs
Database Link:	<a href="#">Entrez Gene 8434 Human O95980</a>



[View online »](#)

**Background:**

RECK is a cysteine-rich, extracellular protein with protease inhibitor-like domains whose expression is suppressed strongly in many tumors and cells transformed by various kinds of oncogenes. In normal cells, this membrane-anchored glycoprotein may serve as a negative regulator for matrix metalloproteinase-9, a key enzyme involved in tumor invasion and metastasis.

**Synonyms:**

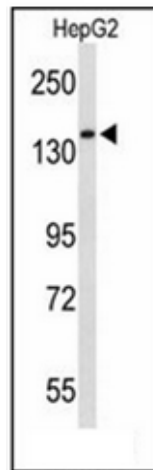
hRECK; ST15

**Note:**

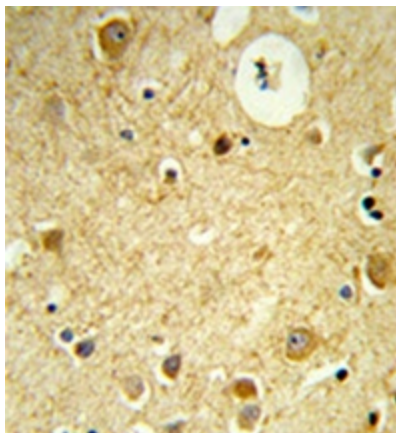
**Molecular Weight:** 106457 Da

**Protein Families:**

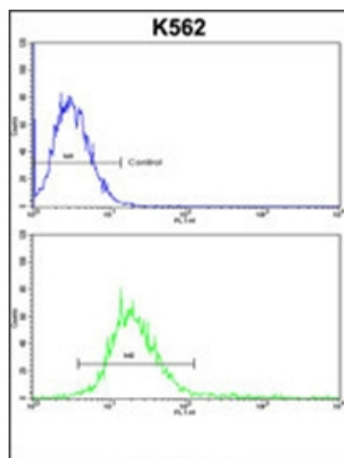
Transmembrane

**Product images:**


Western blot analysis of RECK / ST15 Antibody in HepG2 cell line lysates (35ug/lane). RECK (arrow) was detected using the purified Pab.



Formalin-fixed and paraffin-embedded human brain tissue reacted with RECK / ST15 Antibody which was peroxidase-conjugated to the secondary antibody, followed by DAB staining.



Flow cytometric analysis of k562 cells using RECK / ST15 Antibody (bottom histogram) compared to a negative control cell (top histogram). FITC-conjugated goat-anti-rabbit secondary antibodies were used for the analysis.