

## Product datasheet for **AP53624PU-N**

### **RDH13 (Center) Rabbit Polyclonal Antibody**

#### **Product data:**

Product Type:	Primary Antibodies
Applications:	FC, WB
Recommended Dilution:	<b>ELISA:</b> 1/1000. <b>Western Blot:</b> 1/100-1/500. <b>Flow Cytometry:</b> 1/10-/50.
Reactivity:	Human
Host:	Rabbit
Isotype:	Ig
Clonality:	Polyclonal
Immunogen:	KLH conjugated synthetic peptide between 173-202 amino acids from the Central region of Human RDH13.
Specificity:	This antibody recognizes Human RDH13 (Center).
Formulation:	PBS containing 0.09% (W/V) Sodium Azide as preservative State: Aff - Purified State: Liquid purified Ig fraction
Concentration:	lot specific
Purification:	Protein A column, followed by peptide affinity purification
Conjugation:	Unconjugated
Storage:	Store undiluted at 2-8°C for one month or (in aliquots) at -20°C for longer. Avoid repeated freezing and thawing.
Stability:	Shelf life: one year from despatch.
Gene Name:	retinol dehydrogenase 13 (all-trans/9-cis)
Database Link:	<a href="#">Entrez Gene 112724 Human Q8NBN7</a>
Background:	This gene encodes a mitochondrial short-chain dehydrogenase/reductase, which catalyzes the reduction and oxidation of retinoids. The encoded enzyme may function in retinoic acid production and may also protect the mitochondria against oxidative stress. Alternatively spliced transcript variants have been described.



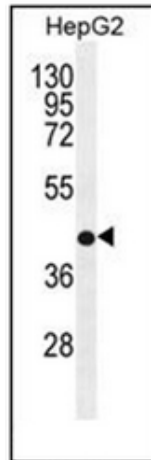
[View online »](#)

**Synonyms:** Retinol dehydrogenase 13

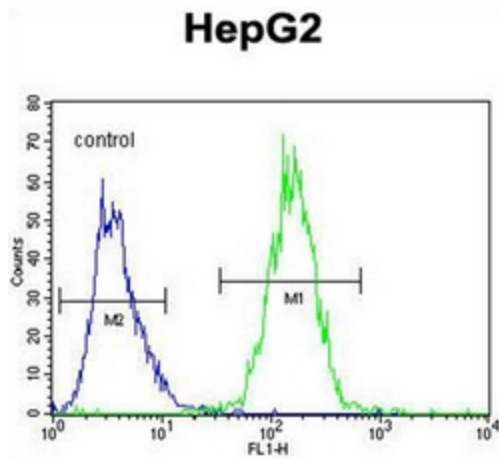
**Note:** **Molecular Weight:** 35932 Da

**Protein Families:** Druggable Genome

**Product images:**



Western blot analysis of RDH13 Antibody in HepG2 cell line lysates (35ug/lane). This demonstrates the RDH13 antibody detected the RDH13 protein (arrow).



Flow cytometric analysis of HepG2 cells using RDH13 Antibody (right histogram) compared to a negative control cell (left histogram). FITC-conjugated goat-anti-rabbit secondary antibodies were used for the analysis.