

Product datasheet for **AP53619PU-N**

RBPMS2 (Center) Rabbit Polyclonal Antibody

Product data:

| | |
|------------------------------|--|
| Product Type: | Primary Antibodies |
| Applications: | IHC, WB |
| Recommended Dilution: | ELISA: 1/1000. Western Blot: 1/100-1/500. Immunohistochemistry on Paraffin Sections: 1/10-1/50. |
| Reactivity: | Human, Mouse |
| Host: | Rabbit |
| Isotype: | Ig |
| Clonality: | Polyclonal |
| Immunogen: | KLH conjugated synthetic peptide between 120-149 amino acids from the Central region of Human RBPMS2. |
| Specificity: | This antibody recognizes Human and Mouse RBPMS2 (Center). |
| Formulation: | PBS State: Aff - Purified State: Liquid purified Ig fraction Preservative: 0.09% Sodium Azide |
| Concentration: | lot specific |
| Purification: | Affinity Chromatography on Protein A |
| Conjugation: | Unconjugated |
| Storage: | Store undiluted at 2-8°C for one month or (in aliquots) at -20°C for longer. Avoid repeated freezing and thawing. |
| Stability: | Shelf life: one year from despatch. |
| Gene Name: | RNA binding protein with multiple splicing 2 |



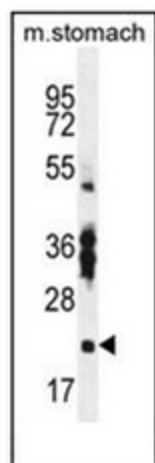
Database Link: [Entrez Gene 71973 Mouse](#)[Entrez Gene 348093 Human](#)
[Q6ZRY4](#)

Background: RBPM2 contains one RRM (RNA recognition motif) domain. The exact function of RBPM2 remains unknown.

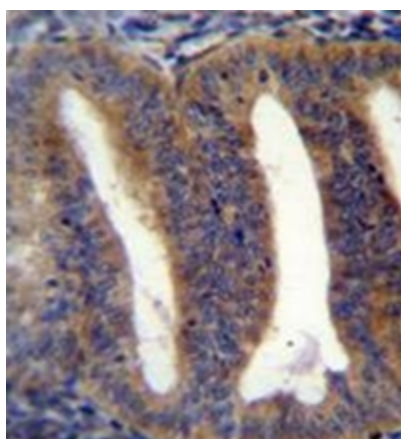
Synonyms: Rbpms2

Note: **Molecular Weight:** 22497 Da

Product images:



Western blot analysis of RBPM2 Antibody in Mouse stomach tissue lysates (35ug/lane). This demonstrates the RBPM2 antibody detected the RBPM2 protein (arrow).



Formalin fixed, paraffin embedded human uterus tissue stained with RBPM2 Antibody followed by peroxidase conjugation of the secondary antibody and DAB staining.