

Product datasheet for **AP53617PU-N**

RBP2 (Center) Rabbit Polyclonal Antibody

Product data:

Product Type:	Primary Antibodies
Applications:	WB
Recommended Dilution:	ELISA: 1/1000. Western Blot: 1/100-1/500.
Reactivity:	Human
Host:	Rabbit
Isotype:	Ig
Clonality:	Polyclonal
Immunogen:	KLH conjugated synthetic peptide between 63–92 amino acids from the Central region of Human RBP2.
Specificity:	This antibody recognizes Human Retinol-binding protein 2 / RBP2 (Center).
Formulation:	PBS State: Aff - Purified State: Liquid purified Ig fraction Preservative: 0.09% Sodium Azide
Concentration:	lot specific
Purification:	Affinity Chromatography on Protein A
Conjugation:	Unconjugated
Storage:	Store undiluted at 2-8°C for one month or (in aliquots) at -20°C for longer. Avoid repeated freezing and thawing.
Stability:	Shelf life: one year from despatch.
Gene Name:	retinol binding protein 2
Database Link:	Entrez Gene 5948 Human P50120



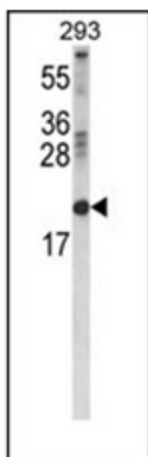
[View online »](#)

Background: RBP2 is an abundant protein present in the small intestinal epithelium. It is thought to participate in the uptake and/or intracellular metabolism of vitamin A. Vitamin A is a fat-soluble vitamin necessary for growth, reproduction, differentiation of epithelial tissues, and vision. RBP2 may also modulate the supply of retinoic acid to the nuclei of endometrial cells during the menstrual cycle.

Synonyms: Cellular retinol-binding protein II, CRBP2, CRBP-II, CRABPII, CRABP-II

Note: **Molecular Weight:** 15707 Da

Product images:



Western blot analysis of RBP2 Antibody (Center) in 293 cell line lysates (35ug/lane). RBP2 (arrow) was detected using the purified Pab.