

## Product datasheet for **AP53616PU-N**

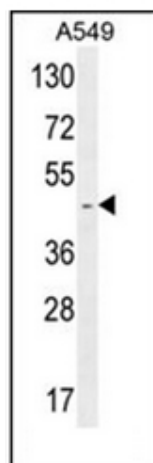
### **RBMX2 (C-term) Rabbit Polyclonal Antibody**

#### **Product data:**

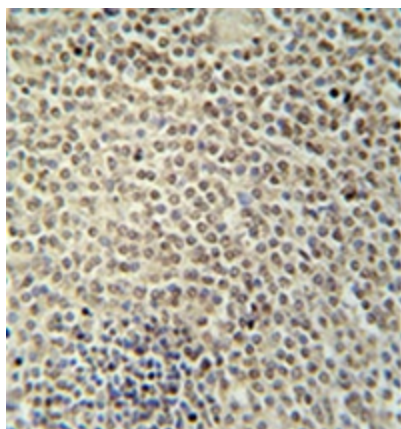
Product Type:	Primary Antibodies
Applications:	IHC, WB
Recommended Dilution:	<b>ELISA:</b> 1/1000. <b>Western Blot:</b> 1/100-1/500. <b>Immunohistochemistry on Paraffin Sections:</b> 1/10-1/50.
Reactivity:	Human
Host:	Rabbit
Isotype:	Ig
Clonality:	Polyclonal
Immunogen:	KLH conjugated synthetic peptide between 245-265 amino acids from the C-terminal region of Human RBMX2.
Specificity:	This antibody recognizes Human RBMX2 (C-term).
Formulation:	PBS State: Aff - Purified State: Liquid purified Ig fraction Preservative: 0.09% Sodium Azide
Concentration:	lot specific
Purification:	Affinity Chromatography on Protein A
Conjugation:	Unconjugated
Storage:	Store undiluted at 2-8°C for one month or (in aliquots) at -20°C for longer. Avoid repeated freezing and thawing.
Stability:	Shelf life: one year from despatch.
Gene Name:	RNA binding motif protein, X-linked 2
Database Link:	<a href="#">Entrez Gene 51634 Human</a> <a href="#">Q9Y388</a>
Synonyms:	CGI-79
Note:	<b>Molecular Weight:</b> 37336 Da



[View online »](#)

**Product images:**

Western blot analysis of RBMX2 Antibody (C-term) in A549 cell line lysates (35ug/lane). This demonstrates the #MX2 antibody detected the RBMX2 protein (arrow).



Formalin fixed, paraffin embedded human spleen tissue stained with RBMX2 Antibody (C-term) followed by peroxidase conjugation of the secondary antibody and DAB staining.