

## Product datasheet for **AP53613PU-N**

### **RBM45 (C-term) Rabbit Polyclonal Antibody**

#### **Product data:**

Product Type:	Primary Antibodies
Applications:	WB
Recommended Dilution:	<b>ELISA:</b> 1/1000. <b>Western Blot:</b> 1/100-1/500.
Reactivity:	Human
Host:	Rabbit
Isotype:	Ig
Clonality:	Polyclonal
Immunogen:	KLH conjugated synthetic peptide between 446-476 amino acids from the C-terminal region of Human RBM45.
Specificity:	This antibody recognizes Human6 RBM45 (C-term).
Formulation:	PBS State: Aff - Purified State: Liquid purified Ig fraction Preservative: 0.09% Sodium Azide
Concentration:	lot specific
Purification:	Affinity Chromatography on Protein A
Conjugation:	Unconjugated
Storage:	Store undiluted at 2-8°C for one month or (in aliquots) at -20°C for longer. Avoid repeated freezing and thawing.
Stability:	Shelf life: one year from despatch.
Gene Name:	RNA binding motif protein 45
Database Link:	<a href="#">Entrez Gene 129831 Human Q8IUH3</a>
Background:	RNA-binding protein with binding specificity for poly(C). May play an important role in neural development.

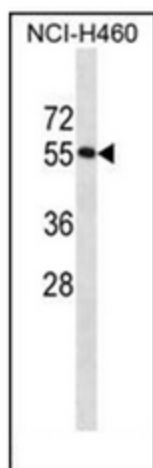


[View online »](#)

**Synonyms:** RNA-binding protein 45, DRB1, DRBP1

**Note:** **Molecular Weight:** 53502 Da

**Product images:**



Western blot analysis of RBM45 Antibody (C-term) in NCI-H460 cell line lysates (35ug/lane). This demonstrates the RBM45 antibody detected the RBM45 protein (arrow).