

Product datasheet for **AP53610PU-N**

RBM42 (C-term) Rabbit Polyclonal Antibody

Product data:

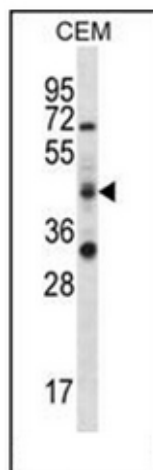
Product Type:	Primary Antibodies
Applications:	IHC, WB
Recommended Dilution:	ELISA: 1/1000. Western Blot: 1/100-1/500. Immunohistochemistry on Paraffin Sections: 1/10-1/50.
Reactivity:	Human
Host:	Rabbit
Isotype:	Ig
Clonality:	Polyclonal
Immunogen:	KLH conjugated synthetic peptide between 393-422 amino acids from the C-terminal region of Human RBM42.
Specificity:	This antibody recognizes Human RBM42 (C-term).
Formulation:	PBS State: Aff - Purified State: Liquid purified Ig fraction Preservative: 0.09% Sodium Azide
Concentration:	lot specific
Purification:	Affinity Chromatography on Protein A
Conjugation:	Unconjugated
Storage:	Store undiluted at 2-8°C for one month or (in aliquots) at -20°C for longer. Avoid repeated freezing and thawing.
Stability:	Shelf life: one year from despatch.
Gene Name:	RNA binding motif protein 42
Database Link:	Entrez Gene 79171 Human Q9BTD8
Background:	RBM42 binds (via the RRM domain) to the 3'-untranslated region (UTR) of CDKN1A mRNA (By similarity).
Synonyms:	RNA-binding protein 42



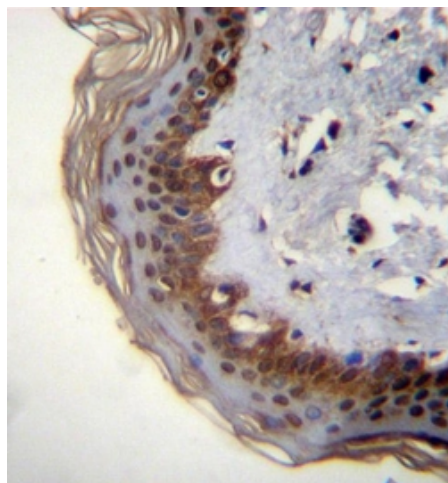
[View online »](#)

Note: **Molecular Weight:** 50414 Da

Product images:



Western blot analysis of RBM42 Antibody (C-term) in CEM cell line lysates (35ug/lane). This demonstrates the RBM42 antibody detected the RBM42 protein (arrow).



Formalin fixed, paraffin embedded human skin tissue stained with RBM42 Antibody (C-term) followed by peroxidase conjugation of the secondary antibody and DAB staining. This data demonstrates the use of RBM42 Antibody (C-term) for immunohistochemistry. Clinical relevance has not been evaluated.