

Product datasheet for **AP53609PU-N**

RBM28 (N-term) Rabbit Polyclonal Antibody

Product data:

Product Type:	Primary Antibodies
Applications:	WB
Recommended Dilution:	ELISA: 1/1000. Western Blot: 1/100-1/500.
Reactivity:	Human
Host:	Rabbit
Isotype:	Ig
Clonality:	Polyclonal
Immunogen:	KLH conjugated synthetic peptide between 69-99 amino acids from the N-terminal region of Human RBM28.
Specificity:	This antibody recognizes Human RBM28 (N-term).
Formulation:	PBS State: Aff - Purified State: Liquid purified Ig fraction Preservative: 0.09% Sodium Azide
Concentration:	lot specific
Purification:	Affinity Chromatography on Protein A
Conjugation:	Unconjugated
Storage:	Store undiluted at 2-8°C for one month or (in aliquots) at -20°C for longer. Avoid repeated freezing and thawing.
Stability:	Shelf life: one year from despatch.
Gene Name:	RNA binding motif protein 28
Database Link:	Entrez Gene 55131 Human Q9NW13



[View online »](#)

Background:

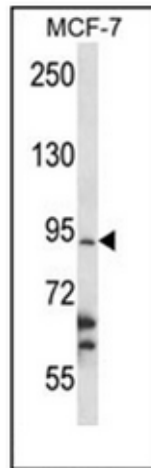
The protein encoded by this gene is a specific nucleolar component of the spliceosomal small nuclear ribonucleoprotein (snRNP) complexes. It specifically associates with U1, U2, U4, U5, and U6 small nuclear RNAs (snRNAs), possibly coordinating their transition through the nucleolus. Mutation in this gene causes alopecia, progressive neurological defects, and endocrinopathy (ANE syndrome), a pleiotropic and clinically heterogeneous disorder. Alternatively spliced transcript variants encoding different isoforms have been found for this gene.

Synonyms:

RNA-binding protein 28

Note:

Molecular Weight: 85738 Da

Product images:

Western blot analysis of RBM28 Antibody (N-term) in MCF-7 cell line lysates (35ug/lane). This demonstrates the RBM28 antibody detected the RBM28 protein (arrow).