

Product datasheet for **AP53607PU-N**

RBM26 (N-term) Rabbit Polyclonal Antibody

Product data:

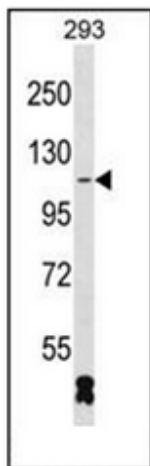
| | |
|-----------------------|---|
| Product Type: | Primary Antibodies |
| Applications: | WB |
| Recommended Dilution: | ELISA: 1/1000. Western Blot: 1/100-1/500. |
| Reactivity: | Human |
| Host: | Rabbit |
| Isotype: | Ig |
| Clonality: | Polyclonal |
| Immunogen: | KLH conjugated synthetic peptide between 195-225 amino acids from the N-terminal region of Human RBM26. |
| Specificity: | This antibody recognizes Human RBM26 (N-term). |
| Formulation: | PBS State: Aff - Purified State: Liquid purified Ig fraction Preservative: 0.09% Sodium Azide |
| Concentration: | lot specific |
| Purification: | Affinity Chromatography on Protein A |
| Conjugation: | Unconjugated |
| Storage: | Store undiluted at 2-8°C for one month or (in aliquots) at -20°C for longer. Avoid repeated freezing and thawing. |
| Stability: | Shelf life: one year from despatch. |
| Gene Name: | RNA binding motif protein 26 |
| Database Link: | Entrez Gene 64062 Human Q5T8P6 |
| Background: | RBM26 (RNA binding motif protein 26) bears two RNA recognition motif (RRM) domains and a C3H1-type zinc finger. The function remains unknown. |
| Synonyms: | RNA-binding protein 26, CTCL tumor antigen se70-2, C13orf10, PRO1777 |



[View online »](#)

Note: **Molecular Weight:** 113597 Da

Product images:



Western blot analysis of RBM26 Antibody (N-term) in 293 cell line lysates (35ug/lane). This demonstrates the RBM26 antibody detected the RBM26 protein (arrow).