

Product datasheet for **AP53606PU-N**

RBM22 (Center) Rabbit Polyclonal Antibody

Product data:

Product Type:	Primary Antibodies
Applications:	WB
Recommended Dilution:	ELISA: 1/1000. Western Blot: 1/100-1/500.
Reactivity:	Human
Host:	Rabbit
Isotype:	Ig
Clonality:	Polyclonal
Immunogen:	KLH conjugated synthetic peptide between 164-193 amino acids from the Central region of Human RBM22.
Specificity:	This antibody recognizes Human RBM22 (Center).
Formulation:	PBS State: Aff - Purified State: Liquid purified Ig fraction Preservative: 0.09% Sodium Azide
Concentration:	lot specific
Purification:	Affinity Chromatography on Protein A
Conjugation:	Unconjugated
Storage:	Store undiluted at 2-8°C for one month or (in aliquots) at -20°C for longer. Avoid repeated freezing and thawing.
Stability:	Shelf life: one year from despatch.
Gene Name:	RNA binding motif protein 22
Database Link:	Entrez Gene 55696 Human Q9NW64
Background:	This gene encodes an RNA binding protein. The encoded protein may play a role in cell division and may be involved in pre-mRNA splicing. Related pseudogenes exist on chromosomes 6, 7, 9, 13, 16, 18, and X.
Synonyms:	ZC3H16

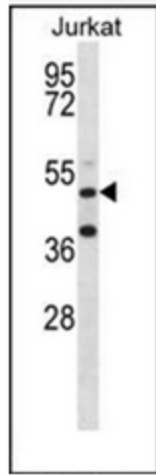


[View online »](#)

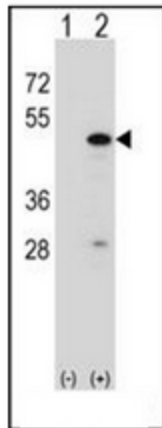
Note: **Molecular Weight:** 46896 Da

Protein Pathways: Spliceosome

Product images:



Western blot analysis of RBM22 Antibody in Jurkat cell line lysates (35ug/lane). This demonstrates the RBM22 antibody detected the RBM22 protein (arrow).



Western blot analysis of RBM22 (arrow) using RBM22 Antibody. 293 cell lysates (2 ug/lane) either nontransfected (Lane 1) or transiently transfected (Lane 2) with the RBM22 gene.