

Product datasheet for **AP53604PU-N**

RBM12 (Center) Rabbit Polyclonal Antibody

Product data:

| | |
|-----------------------|--|
| Product Type: | Primary Antibodies |
| Applications: | WB |
| Recommended Dilution: | ELISA: 1/1000. Western Blot: 1/100-1/500. |
| Reactivity: | Human, Mouse |
| Host: | Rabbit |
| Isotype: | Ig |
| Clonality: | Polyclonal |
| Immunogen: | KLH conjugated synthetic peptide between 574-603 amino acids from the Central region of Human RBM12. |
| Specificity: | This antibody recognizes Human and Mouse RBM12 (Center). |
| Formulation: | PBS State: Aff - Purified State: Liquid purified Ig fraction Preservative: 0.09% Sodium Azide |
| Concentration: | lot specific |
| Purification: | Affinity Chromatography on Protein A |
| Conjugation: | Unconjugated |
| Storage: | Store undiluted at 2-8°C for one month or (in aliquots) at -20°C for longer. Avoid repeated freezing and thawing. |
| Stability: | Shelf life: one year from despatch. |
| Gene Name: | RNA binding motif protein 12 |
| Database Link: | Entrez Gene 75710 Mouse Entrez Gene 10137 Human Q9NTZ6 |
| Background: | This gene encodes a protein that contains several RNA-binding motifs, potential transmembrane domains, and proline-rich regions. This gene and the gene for copine I overlap at map location 20q11.21. Alternative splicing in the 5' UTR results in four transcript variants. All variants encode the same protein. |

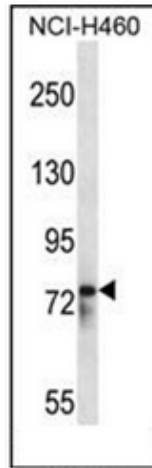


[View online »](#)

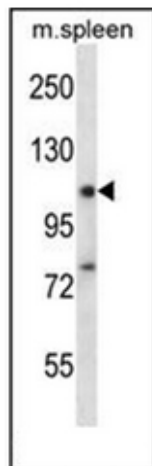
Synonyms: RNA-binding protein 12, SWAN, KIAA0765

Note: **Molecular Weight:** 97395 Da

Product images:



Western blot analysis of RBM12 Antibody in NCI-H460 cell line lysates (35ug/lane). This demonstrates the RBM12 antibody detected the RBM12 protein (arrow).



Western blot analysis of RBM12 Antibody in Mouse spleen tissue lysates (35ug/lane). This demonstrates the RBM12 antibody detected the RBM12 protein (arrow).