

## Product datasheet for **AP53603PU-N**

### **RBM10 (N-term) Rabbit Polyclonal Antibody**

#### **Product data:**

Product Type:	Primary Antibodies
Applications:	WB
Recommended Dilution:	<b>ELISA:</b> 1/1000. <b>Western Blot:</b> 1/100-1/500.
Reactivity:	Human
Host:	Rabbit
Isotype:	Ig
Clonality:	Polyclonal
Immunogen:	KLH conjugated synthetic peptide between 84-113 amino acids from the N-terminal region of Human RBM10.
Specificity:	This antibody recognizes Human RBM10 (N-term).
Formulation:	PBS State: Aff - Purified State: Liquid purified Ig fraction Preservative: 0.09% Sodium Azide
Concentration:	lot specific
Purification:	Affinity Chromatography on Protein A
Conjugation:	Unconjugated
Storage:	Store undiluted at 2-8°C for one month or (in aliquots) at -20°C for longer. Avoid repeated freezing and thawing.
Stability:	Shelf life: one year from despatch.
Gene Name:	RNA binding motif protein 10
Database Link:	<a href="#">Entrez Gene 8241 Human P98175</a>



[View online »](#)

**Background:**

The protein encoded by this gene contains RNA recognition motif found in a variety of RNA binding proteins, including various hnRNP proteins, proteins implicated in regulation of alternative splicing, and protein components of snRNPs. In vitro studies showed that the rat homolog bound to RNA homopolymers, with a preference for G and U polyribonucleotides. This gene is part of a gene cluster on chromosome Xp11.23, and its 3' end lies within 20 kb upstream of UBE1. Two transcript variants encoding different isoforms have been identified for this gene.

**Synonyms:**

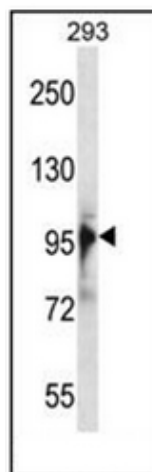
RNA-binding protein 10, DXS8237E, GPATC9, GPATCH9, KIAA0122

**Note:**

**Molecular Weight:** 103533 Da

**Protein Families:**

Druggable Genome

**Product images:**

Western blot analysis of RBM10 Antibody (N-term) in 293 cell line lysates (35ug/lane). This demonstrates the RBM10 antibody detected the RBM10 protein (arrow).