

Product datasheet for **AP53602PU-N**

Rb2 p130 (RBL2) (N-term) Rabbit Polyclonal Antibody

Product data:

Product Type:	Primary Antibodies
Applications:	WB
Recommended Dilution:	ELISA: 1/1000. Western Blot: 1/100-1/500.
Reactivity:	Human
Host:	Rabbit
Isotype:	Ig
Clonality:	Polyclonal
Immunogen:	KLH conjugated synthetic peptide between 164-195 amino acids from the N-terminal region of Human RBL2.
Specificity:	This antibody recognizes Human RBL2 / p130 (N-term).
Formulation:	PBS State: Aff - Purified State: Liquid purified Ig fraction Preservative: 0.09% Sodium Azide
Concentration:	lot specific
Purification:	Affinity Chromatography on Protein A
Conjugation:	Unconjugated
Storage:	Store undiluted at 2-8°C for one month or (in aliquots) at -20°C for longer. Avoid repeated freezing and thawing.
Stability:	Shelf life: one year from despatch.
Gene Name:	RB transcriptional corepressor like 2
Database Link:	Entrez Gene 5934 Human Q08999



[View online »](#)

Background: RBL2 is a key regulator of entry into cell division. Directly involved in heterochromatin formation by maintaining overall chromatin structure and, in particular, that of constitutive heterochromatin by stabilizing histone methylation. Recruits and targets histone methyltransferases SUV420H1 and SUV420H2, leading to epigenetic transcriptional repression. Controls histone H4 'Lys-20' trimethylation. Probably acts as a transcription repressor by recruiting chromatin-modifying enzymes to promoters. Potent inhibitor of E2F-mediated trans-activation, associates preferentially with E2F5. Binds to cyclins A and E. Binds to and may be involved in the transforming capacity of the adenovirus E1A protein. RBL2 may act as a tumor suppressor.

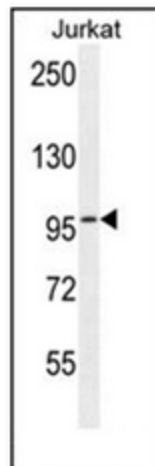
Synonyms: Retinoblastoma-like protein 2, RB2, 130 kDa retinoblastoma-associated protein, p130, Retinoblastoma-related protein 2, RBR-2, pRb2

Note: **Molecular Weight:** 128367 Da

Protein Families: Druggable Genome, Transcription Factors

Protein Pathways: Cell cycle, TGF-beta signaling pathway

Product images:



Western blot analysis of RBL2 / p130 Antibody (N-term) in Jurkat cell line lysates (35ug/lane). This demonstrates the RBL2 antibody detected the RBL2 protein (arrow).