

Product datasheet for **AP53600PU-N**

RbAp46 (RBBP7) (Center) Rabbit Polyclonal Antibody

Product data:

Product Type:	Primary Antibodies
Applications:	WB
Recommended Dilution:	ELISA: 1/1000. Western Blot: 1/100-1/500.
Reactivity:	Human
Host:	Rabbit
Isotype:	Ig
Clonality:	Polyclonal
Immunogen:	KLH conjugated synthetic peptide between 190-219 amino acids from the Central region of Human RBBP7.
Specificity:	This antibody recognizes Human RBBP7 (Center).
Formulation:	PBS State: Aff - Purified State: Liquid purified Ig fraction Preservative: 0.09% Sodium Azide
Concentration:	lot specific
Purification:	Affinity Chromatography on Protein A
Conjugation:	Unconjugated
Storage:	Store undiluted at 2-8°C for one month or (in aliquots) at -20°C for longer. Avoid repeated freezing and thawing.
Stability:	Shelf life: one year from despatch.
Gene Name:	RB binding protein 7, chromatin remodeling factor
Database Link:	Entrez Gene 5931 Human Q16576



[View online »](#)

Background:

This protein is a ubiquitously expressed nuclear protein and belongs to a highly conserved subfamily of WD-repeat proteins. It is found among several proteins that binds directly to retinoblastoma protein, which regulates cell proliferation. The encoded protein is found in many histone deacetylase complexes, including mSin3 co-repressor complex. It is also present in protein complexes involved in chromatin assembly. This protein can interact with BRCA1 tumor-suppressor gene and may have a role in the regulation of cell proliferation and differentiation. Two transcript variants encoding different isoforms have been found for this gene.

Synonyms:

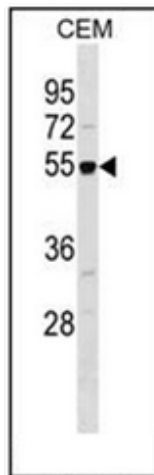
RBBP-7

Note:

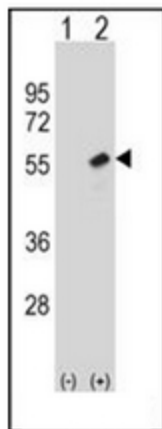
Molecular Weight: 47820 Da

Protein Families:

Druggable Genome

Product images:


Western blot analysis of RBBP7 / RBAP46 Antibody in CEM cell line lysates (35ug/lane). This demonstrates the RBBP7 antibody detected the RBBP7 protein (arrow).



Western blot analysis of RBBP7 (arrow) using RBBP7 / RBAP46 Antibody. 293 cell lysates (2 ug/lane) either nontransfected (Lane 1) or transiently transfected (Lane 2) with the RBBP7 gene.