

Product datasheet for **AP53598PU-N**

FIP200 (RB1CC1) (Center) Rabbit Polyclonal Antibody

Product data:

Product Type:	Primary Antibodies
Applications:	WB
Recommended Dilution:	ELISA: 1/1000. Western Blot: 1/100-1/500.
Reactivity:	Human, Mouse
Host:	Rabbit
Isotype:	Ig
Clonality:	Polyclonal
Immunogen:	KLH conjugated synthetic peptide between 496-523 amino acids from the Central region of Human RB1CC1.
Specificity:	This antibody recognizes Human and Mouse RB1CC1 (Center).
Formulation:	PBS State: Aff - Purified State: Liquid purified Ig fraction Preservative: 0.09% Sodium Azide
Concentration:	lot specific
Purification:	Affinity Chromatography on Protein A
Conjugation:	Unconjugated
Storage:	Store undiluted at 2-8°C for one month or (in aliquots) at -20°C for longer. Avoid repeated freezing and thawing.
Stability:	Shelf life: one year from despatch.
Gene Name:	RB1 inducible coiled-coil 1
Database Link:	Entrez Gene 12421 Mouse Entrez Gene 9821 Human Q8TDY2
Background:	The protein encoded by this gene interacts with signaling pathways to coordinately regulate cell growth, cell proliferation, apoptosis, autophagy, and cell migration. This tumor suppressor also enhances retinoblastoma 1 gene expression in cancer cells. Alternative splicing results in multiple transcript variants encoding distinct isoforms.



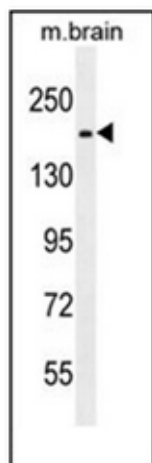
[View online »](#)

Synonyms: KIAA0203, RBICC, FIP200

Note: **Molecular Weight:** 183091 Da

Protein Families: Druggable Genome

Product images:



Western blot analysis of RB1CC1 Antibody in Mouse brain tissue lysates (35ug/lane). This demonstrates the RB1CC1 antibody detected the RB1CC1 protein (arrow).