

Product datasheet for **AP53596PU-N**

RAVER1 (N-term) Rabbit Polyclonal Antibody

Product data:

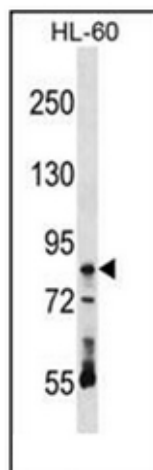
Product Type:	Primary Antibodies
Applications:	WB
Recommended Dilution:	ELISA: 1/1000. Western Blot: 1/100-1/500.
Reactivity:	Human
Host:	Rabbit
Isotype:	Ig
Clonality:	Polyclonal
Immunogen:	KLH conjugated synthetic peptide between 55-83 amino acids from the N-terminal region of Human RAVR1.
Specificity:	This antibody recognizes Human RAVR1 (N-term).
Formulation:	PBS State: Aff - Purified State: Liquid purified Ig fraction Preservative: 0.09% Sodium Azide
Concentration:	lot specific
Purification:	Affinity Chromatography on Protein A
Conjugation:	Unconjugated
Storage:	Store undiluted at 2-8°C for one month or (in aliquots) at -20°C for longer. Avoid repeated freezing and thawing.
Stability:	Shelf life: one year from despatch.
Gene Name:	ribonucleoprotein, PTB binding 1
Database Link:	Entrez Gene 125950 Human Q8IY6Z
Background:	RAVR1 cooperates with PTBP1 to modulate regulated alternative splicing events. Promotes exon skipping. Cooperates with PTBP1 to modulate switching between mutually exclusive exons during maturation of the TPM1 pre-mRNA (By similarity).
Synonyms:	Protein raver-1, KIAA1978



[View online »](#)

Note: **Molecular Weight:** 63877 Da (78kd Isoform 2)

Product images:



Western blot analysis of RAV1 Antibody (N-term) in HL-60 cell line lysates (35ug/lane). This demonstrates the RAV1 antibody detected the RAV1 protein (arrow).