

Product datasheet for **AP53593PU-N**

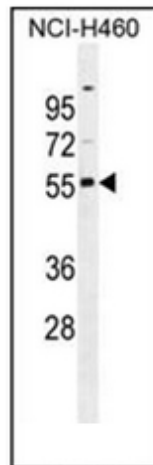
RASSF8 (N-term) Rabbit Polyclonal Antibody

Product data:

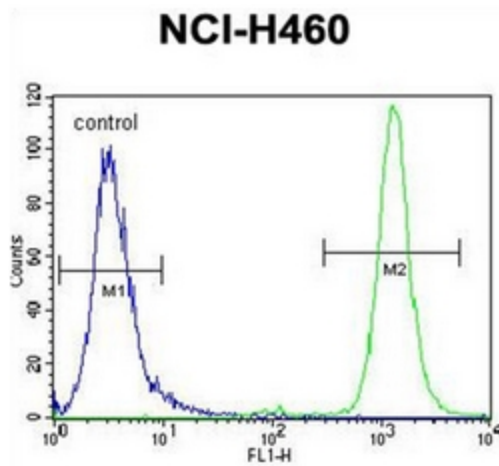
Product Type:	Primary Antibodies
Applications:	FC, WB
Recommended Dilution:	ELISA: 1/1000. Western Blot: 1/100-1/500. Flow Cytometry: 1/10-1/50.
Reactivity:	Human
Host:	Rabbit
Isotype:	Ig
Clonality:	Polyclonal
Immunogen:	KLH conjugated synthetic peptide between 103-132 amino acids from the N-terminal region of Human RASSF8.
Specificity:	This antibody recognizes Human RASSF8 (N-term).
Formulation:	PBS State: Aff - Purified State: Liquid purified Ig fraction Preservative: 0.09% Sodium Azide
Concentration:	lot specific
Purification:	Affinity Chromatography on Protein A
Conjugation:	Unconjugated
Storage:	Store undiluted at 2-8°C for one month or (in aliquots) at -20°C for longer. Avoid repeated freezing and thawing.
Stability:	Shelf life: one year from despatch.
Gene Name:	Ras association domain family member 8
Database Link:	Entrez Gene 11228 Human Q8NHQ8
Synonyms:	C12orf2
Note:	Molecular Weight: 48327 Da



[View online »](#)

Product images:


Western blot analysis of RASSF8 antibody (N-term) in NCI-H460 cell line lysates (35ug/lane). This demonstrates the RASSF8 antibody detected the RASSF8 protein (arrow).



Flow cytometric analysis of NCI-H460 cells using RASSF8 antibody (N-term) (right histogram) compared to a negative control cell (left histogram). FITC-conjugated goat-anti-rabbit secondary antibodies were used for the analysis.