

Product datasheet for **AP53592PU-N**

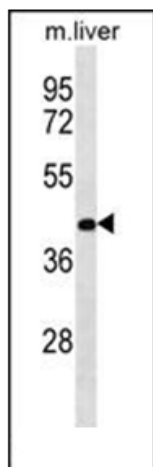
RASSF10 (Center) Rabbit Polyclonal Antibody

Product data:

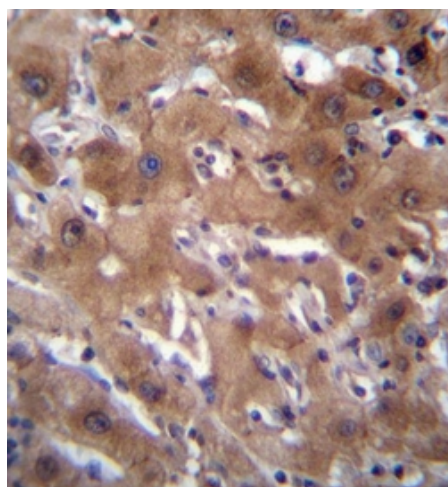
Product Type:	Primary Antibodies
Applications:	IHC, WB
Recommended Dilution:	ELISA: 1/1000. Western Blot: 1/100-1/500. Immunohistochemistry on Paraffin Sections: 1/10-1/50.
Reactivity:	Human, Mouse
Host:	Rabbit
Isotype:	Ig
Clonality:	Polyclonal
Immunogen:	KLH conjugated synthetic peptide between 229-259 amino acids from the Central region of Human RASSF10.
Specificity:	This antibody recognizes Human and Mouse RASSF10 (Center).
Formulation:	PBS State: Aff - Purified State: Liquid purified Ig fraction Preservative: 0.09% Sodium Azide
Concentration:	lot specific
Purification:	Affinity Chromatography on Protein A
Conjugation:	Unconjugated
Storage:	Store undiluted at 2-8°C for one month or (in aliquots) at -20°C for longer. Avoid repeated freezing and thawing.
Stability:	Shelf life: one year from despatch.
Gene Name:	Ras association domain family member 10
Database Link:	Entrez Gene 644943 Human A6NK89
Synonyms:	Rassf10
Note:	Molecular Weight: 56900 Da (47kd isoform 2)



[View online »](#)

Product images:

Western blot analysis of RASSF10 Antibody in Mouse liver tissue lysates (35ug/lane). This demonstrates the RASSF10 antibody detected the RASSF10 protein (arrow).



Formalin fixed, paraffin embedded human liver tissue stained with RASSF10 Antibody followed by peroxidase conjugation of the secondary antibody and DAB staining.