

Product datasheet for **AP53586PU-N**

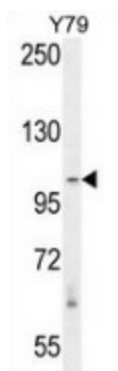
RASAL3 (C-term) Rabbit Polyclonal Antibody

Product data:

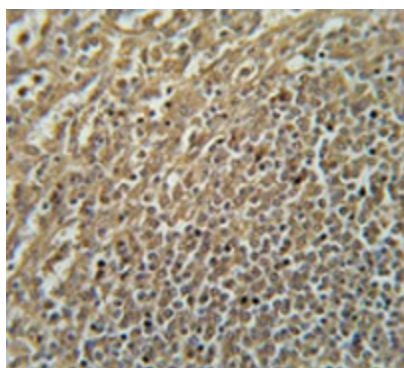
Product Type:	Primary Antibodies
Applications:	IHC, WB
Recommended Dilution:	Immunohistochemistry on Paraffin sections: 1/50-1/100. Western blot: 1/100-1/500. Enzyme immunoassay: 1/1000.
Reactivity:	Human
Host:	Rabbit
Isotype:	Ig
Clonality:	Polyclonal
Immunogen:	Synthetic peptide - KLH conjugated - corresponding to the C-terminal region (between 954-983aa) of human RASAL3.
Specificity:	This antibody recognizes RASAL3 at C-term.
Formulation:	PBS with 0.09% (W/V) Sodium azide State: Aff - Purified State: Liquid purified Ig fraction
Concentration:	lot specific
Purification:	Purified through a Protein A column followed by peptide affinity purification
Conjugation:	Unconjugated
Storage:	Store undiluted at 2-8°C for one month or (in aliquots) at -20°C for longer. Avoid repeated freezing and thawing.
Stability:	Shelf life: one year from despatch.
Gene Name:	RAS protein activator like 3
Database Link:	Entrez Gene 64926 Human Q86YV0
Background:	May functions as a Ras GTPase-activating protein (By similarity).
Synonyms:	RAS protein activator like-3
Note:	Molecular Weight: 111898 Da



[View online »](#)

Product images:

Western blot analysis in Y79 cell line lysates (35ug/lane) using RASAL3 antibody. (C-term). This demonstrates the RASAL3 antibody detected the RASAL3 protein (arrow).



Immunohistochemistry analysis in human spleen tissue (Formalin-fixed, Paraffin-embedded) using RASAL3 antibody. (C-term), followed by peroxidase conjugated secondary antibody and DAB staining. This data demonstrates the use of the RASAL3 antibody for IHC. Clinical relevance has not been evaluated.