

Product datasheet for **AP53585PU-N**

RASAL2 (Center) Rabbit Polyclonal Antibody

Product data:

Product Type:	Primary Antibodies
Applications:	WB
Recommended Dilution:	ELISA: 1/1000. Western Blot: 1/100-1/500.
Reactivity:	Human
Host:	Rabbit
Isotype:	Ig
Clonality:	Polyclonal
Immunogen:	KLH conjugated synthetic peptide between 674-703 amino acids from the Central region of Human RASAL2
Specificity:	This antibody recognizes Human RASAL2 (Center).
Formulation:	PBS State: Aff - Purified State: Liquid purified Ig fraction Preservative: 0.09% Sodium Azide
Concentration:	lot specific
Purification:	Affinity Chromatography on Protein A
Conjugation:	Unconjugated
Storage:	Store undiluted at 2-8°C for one month or (in aliquots) at -20°C for longer. Avoid repeated freezing and thawing.
Stability:	Shelf life: one year from despatch.
Gene Name:	RAS protein activator like 2
Database Link:	Entrez Gene 9462 Human Q9UJF2



[View online »](#)

Background:

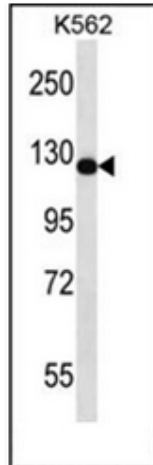
This gene encodes a protein that contains the GAP-related domain (GRD), a characteristic domain of GTPase-activating proteins (GAPs). GAPs function as activators of Ras superfamily of small GTPases. The protein encoded by this gene is able to complement the defective RasGAP function in a yeast system. Two alternatively spliced transcript variants of this gene encoding distinct isoforms have been reported.

Synonyms:

MGC129919; NGAP

Note:

Molecular Weight: 128558 Da

Product images:

Western blot analysis of RASAL2 / NGAP Antibody in K562 cell line lysates (35ug/lane). This demonstrates the RASAL2 antibody detected the RASAL2 protein (arrow).