

## Product datasheet for **AP53583PU-N**

### **RASA1 (C-term) Rabbit Polyclonal Antibody**

#### **Product data:**

Product Type:	Primary Antibodies
Applications:	WB
Recommended Dilution:	<b>ELISA:</b> 1/1000. <b>Western Blot:</b> 1/100-1/500.
Reactivity:	Human
Host:	Rabbit
Isotype:	Ig
Clonality:	Polyclonal
Immunogen:	KLH conjugated synthetic peptide between 965-993 amino acids from the C-terminal region of Human RASA1 / RasGAP.
Specificity:	This antibody recognizes Human RASA1 / RasGAP (C-term).
Formulation:	PBS State: Aff - Purified State: Liquid purified Ig fraction Preservative: 0.09% Sodium Azide
Concentration:	lot specific
Purification:	Affinity Chromatography on Protein A
Conjugation:	Unconjugated
Storage:	Store undiluted at 2-8°C for one month or (in aliquots) at -20°C for longer. Avoid repeated freezing and thawing.
Stability:	Shelf life: one year from despatch.
Gene Name:	RAS p21 protein activator 1
Database Link:	<a href="#">Entrez Gene 5921 Human P20936</a>



[View online »](#)

**Background:**

The protein encoded by this gene is located in the cytoplasm and is part of the GAP1 family of GTPase-activating proteins. The gene product stimulates the GTPase activity of normal RAS p21 but not its oncogenic counterpart. Acting as a suppressor of RAS function, the protein enhances the weak intrinsic GTPase activity of RAS proteins resulting in the inactive GDP-bound form of RAS, thereby allowing control of cellular proliferation and differentiation. Mutations leading to changes in the binding sites of either protein are associated with basal cell carcinomas. Alternative splicing results in two isoforms where the shorter isoform, lacking the N-terminal hydrophobic region but retaining the same activity, appears to be abundantly expressed in placental but not adult tissues.

**Synonyms:**

Ras GTPase-activating protein 1, GAP, Ras p21 protein activator, p120GAP, RASA, p120RASGAP

**Note:**

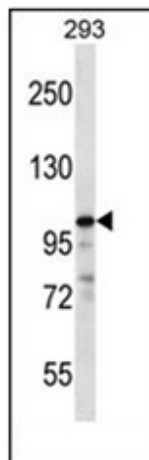
**Molecular Weight:** 116403 Da

**Protein Families:**

Druggable Genome

**Protein Pathways:**

Axon guidance, MAPK signaling pathway

**Product images:**

Western blot analysis of RASA1 / RasGAP (C-term) in 293 cell line lysates (35ug/lane). This demonstrates the RASA1 antibody detected the RASA1 protein (arrow).