

## Product datasheet for **AP53580PU-N**

### **RAP1GDS1 (Center) Rabbit Polyclonal Antibody**

#### **Product data:**

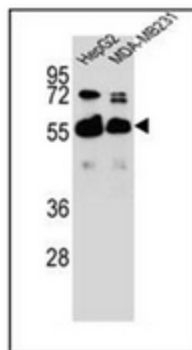
Product Type:	Primary Antibodies
Applications:	IHC, WB
Recommended Dilution:	<b>ELISA:</b> 1/1000. <b>Western Blot:</b> 1/100-1/500. <b>Immunohistochemistry on Paraffin Sections:</b> 1/10-1/50.
Reactivity:	Human
Host:	Rabbit
Isotype:	Ig
Clonality:	Polyclonal
Immunogen:	KLH conjugated synthetic peptide between 224-252 amino acids from the Central region of Human RAP1GDS1
Specificity:	This antibody recognizes Human RAP1GDS1 (Center).
Formulation:	PBS State: Aff - Purified State: Liquid purified Ig fraction Preservative: 0.09% Sodium Azide
Concentration:	lot specific
Purification:	Protein A column, followed by peptide affinity purification
Conjugation:	Unconjugated
Storage:	Store undiluted at 2-8°C for one month or (in aliquots) at -20°C for longer. Avoid repeated freezing and thawing.
Stability:	Shelf life: one year from despatch.
Gene Name:	Rap1 GTPase-GDP dissociation stimulator 1
Database Link:	<a href="#">Entrez Gene 5910 Human P52306</a>
Background:	The smg GDP dissociation stimulator (smgGDS) protein is a stimulatory GDP/GTP exchange protein with GTPase activity (Riess et al., 1993 [PubMed 8262526]).
Synonyms:	GDS1; MGC118859; MGC118861; SmgGDS



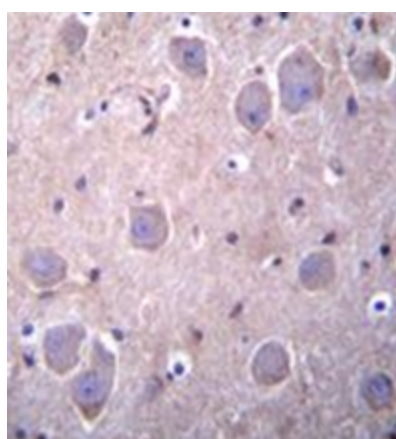
[View online »](#)

Note: **Molecular Weight:** 66317 Da

### Product images:



Western blot analysis of RAP1GDS1 Antibody in HepG2, MDA-MB231 cell line lysates (35ug/lane). This demonstrates the RAP1GDS1 antibody detected the RAP1GDS1 protein (arrow



Formalin fixed, paraffin embedded human brain tissue stained with RAP1GDS1 Antibody followed by peroxidase conjugation of the secondary antibody and DAB staining.