

Product datasheet for **AP53579PU-N**

RAP1B (C-term) Rabbit Polyclonal Antibody

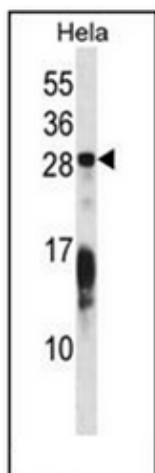
Product data:

Product Type:	Primary Antibodies
Applications:	WB
Recommended Dilution:	ELISA: 1/1000. Western Blot: 1/100-1/500.
Reactivity:	Human
Host:	Rabbit
Isotype:	Ig
Clonality:	Polyclonal
Immunogen:	KLH conjugated synthetic peptide between 149-178 amino acids from the C-terminal region of Human RAP1B.
Specificity:	This antibody recognizes Human RAP1B (C-term).
Formulation:	PBS State: Aff - Purified State: Liquid purified Ig fraction Preservative: 0.09% Sodium Azide
Concentration:	lot specific
Purification:	Protein A column, followed by peptide affinity purification
Conjugation:	Unconjugated
Storage:	Store undiluted at 2-8°C for one month or (in aliquots) at -20°C for longer. Avoid repeated freezing and thawing.
Stability:	Shelf life: one year from despatch.
Gene Name:	RAP1B, member of RAS oncogene family
Database Link:	Entrez Gene 5908 Human P61224
Background:	RAP1B and RAP1A (MIM 179520) belong to a superfamily of RAS (see MIM 190020)-like small GTP-binding proteins involved in cell signaling.
Synonyms:	Rap-1b, RAL1B, K-REV



[View online »](#)

Note:	Molecular Weight: 20825 Da
Protein Families:	Druggable Genome
Protein Pathways:	Chemokine signaling pathway, Focal adhesion, Leukocyte transendothelial migration, Long-term potentiation, MAPK signaling pathway, Neurotrophin signaling pathway, Renal cell carcinoma

Product images:

Western blot analysis of RAP1B Antibody (C-term) in HeLa cell line lysates (35ug/lane). This demonstrates the RAP1B antibody detected the RAP1B protein (arrow).