

## Product datasheet for **AP53578PU-N**

### **RAP1A (C-term) Rabbit Polyclonal Antibody**

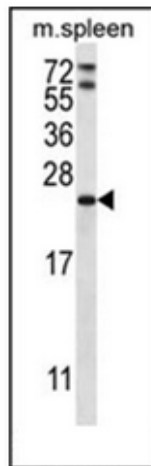
#### **Product data:**

Product Type:	Primary Antibodies
Applications:	WB
Recommended Dilution:	<b>ELISA:</b> 1/1000. <b>Western Blot:</b> 1/100-1/500.
Reactivity:	Human, Mouse
Host:	Rabbit
Isotype:	Ig
Clonality:	Polyclonal
Immunogen:	KLH conjugated synthetic peptide between 141-170 amino acids from the C-terminal region of Human RAP1A.
Specificity:	This antibody recognizes Mouse RAP1A (C-term).
Formulation:	PBS State: Aff - Purified State: Liquid purified Ig fraction Preservative: 0.09% Sodium Azide
Concentration:	lot specific
Purification:	Protein A column, followed by peptide affinity purification
Conjugation:	Unconjugated
Storage:	Store undiluted at 2-8°C for one month or (in aliquots) at -20°C for longer. Avoid repeated freezing and thawing.
Stability:	Shelf life: one year from despatch.
Gene Name:	RAP1A, member of RAS oncogene family
Database Link:	<a href="#">Entrez Gene 109905 Mouse</a> <a href="#">Entrez Gene 5906 Human</a> <a href="#">P62834</a>



[View online »](#)

<b>Background:</b>	The product of this gene belongs to the family of RAS-related proteins. These proteins share approximately 50% amino acid identity with the classical RAS proteins and have numerous structural features in common. The most striking difference between RAP proteins and RAS proteins resides in their 61st amino acid: glutamine in RAS is replaced by threonine in RAP proteins. The product of this gene counteracts the mitogenic function of RAS because it can interact with RAS GAPs and RAF in a competitive manner. Two transcript variants encoding the same protein have been identified for this gene.
<b>Synonyms:</b>	RAP-1A, C21KG, KREV1, KREV-1
<b>Note:</b>	<b>Molecular Weight:</b> 20987 Da
<b>Protein Families:</b>	Druggable Genome
<b>Protein Pathways:</b>	Chemokine signaling pathway, Focal adhesion, Leukocyte transendothelial migration, Long-term potentiation, MAPK signaling pathway, Neurotrophin signaling pathway, Renal cell carcinoma

**Product images:**

Western blot analysis of RAP1A Antibody (C-term) in mouse spleen tissue lysates (35ug/lane). This demonstrates the RAP1A antibody detected the RAP1A protein (arrow).