

Product datasheet for **AP53572PU-N**

RALY (Center) Rabbit Polyclonal Antibody

Product data:

Product Type:	Primary Antibodies
Applications:	WB
Recommended Dilution:	ELISA: 1/1000. Western Blot: 1/100-1/500.
Reactivity:	Human
Host:	Rabbit
Isotype:	Ig
Clonality:	Polyclonal
Immunogen:	KLH conjugated synthetic peptide between 74-103 amino acids from the Central region of human RALY
Specificity:	This antibody recognizes Human RALY (Center).
Formulation:	PBS State: Aff - Purified State: Liquid purified Ig fraction Preservative: 0.09% Sodium Azide
Concentration:	lot specific
Purification:	Affinity Chromatography on Protein A
Conjugation:	Unconjugated
Storage:	Store undiluted at 2-8°C for one month or (in aliquots) at -20°C for longer. Avoid repeated freezing and thawing.
Stability:	Shelf life: one year from despatch.
Gene Name:	RALY heterogeneous nuclear ribonucleoprotein
Database Link:	Entrez Gene 22913 Human Q9UKM9



[View online »](#)

Background:

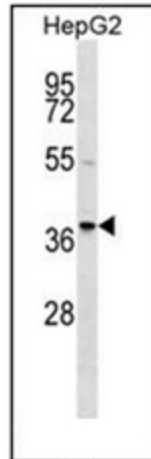
In infectious mononucleosis, anti-EBNA-1 antibodies are produced which cross-react with multiple normal human proteins. The cross-reactivity is due to anti-gly/ala antibodies that cross-react with host proteins containing configurations like those in the EBNA-1 repeat. One such antigen is RALY which is a member of the heterogeneous nuclear ribonucleoprotein gene family. [provided by RefSeq]

Synonyms:

HNRPCL2, Autoantigen P542

Note:

Molecular Weight: 32463 Da

Product images:

Western blot analysis of RALY Antibody in HepG2 cell line lysates (35ug/lane). This demonstrates the RALY antibody detected the RALY protein (arrow).