

## Product datasheet for **AP53568PU-N**

### Rad9 (RAD9A) Rabbit Polyclonal Antibody

#### Product data:

Product Type:	Primary Antibodies
Applications:	IF, IHC, WB
Recommended Dilution:	<b>ELISA:</b> 1/1000. <b>Western Blot:</b> 1/100-1/500. <b>Immunofluorescence:</b> 1/10-1/50. <b>Immunohistochemistry on Paraffin Sections:</b> 1/10-1/50.
Reactivity:	Human
Host:	Rabbit
Isotype:	Ig
Clonality:	Polyclonal
Immunogen:	KLH conjugated synthetic peptide selected from the Human RAD9A.
Specificity:	This antibody recognizes Human RAD9.
Formulation:	PBS State: Aff - Purified State: Liquid purified Ig fraction Preservative: 0.09% Sodium Azide
Concentration:	lot specific
Purification:	Affinity Chromatography on Protein A
Conjugation:	Unconjugated
Storage:	Store undiluted at 2-8°C for one month or (in aliquots) at -20°C for longer. Avoid repeated freezing and thawing.
Stability:	Shelf life: one year from despatch.
Gene Name:	RAD9 checkpoint clamp component A
Database Link:	<a href="#">Entrez Gene 5883 Human Q99638</a>



[View online »](#)

**Background:**

This gene product is highly similar to *Schizosaccharomyces pombe rad9*, a cell cycle checkpoint protein required for cell cycle arrest and DNA damage repair in response to DNA damage. This protein is found to possess 3' to 5' exonuclease activity, which may contribute to its role in sensing and repairing DNA damage. It forms a checkpoint protein complex with RAD1 and HUS1. This complex is recruited by checkpoint protein RAD17 to the sites of DNA damage, which is thought to be important for triggering the checkpoint-signaling cascade. Use of alternative polyA sites has been noted for this gene.

**Synonyms:**

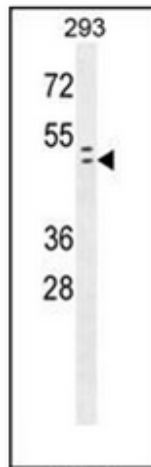
RAD-9A, Cell cycle checkpoint control protein RAD9A, EC=3.1.11.2, DNA repair exonuclease rad9 homolog A

**Note:**

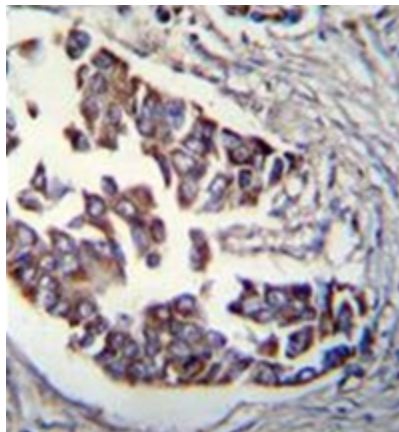
**Molecular Weight:** 42547 Da

**Protein Families:**

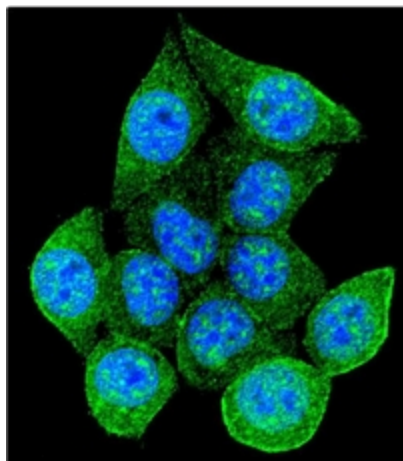
Druggable Genome, Stem cell - Pluripotency

**Product images:**


Western blot analysis of RAD9A Antibody in 293 cell line lysates (35ug/lane). This demonstrates the Rad9 antibody detected the Rad9 protein (arrow).



Formalin fixed, paraffin embedded human breast carcinoma stained with RAD9A Antibody followed by peroxidase conjugation of the secondary antibody and DAB staining.



Confocal immunofluorescent analysis of RAD9A Antibody with 293 cell followed by Alexa Fluor 488-conjugated Goat anti-Rabbit IgG (green). DAPI was used to stain the cell nuclear (blue).