

Product datasheet for **AP53565PU-N**

RAD54 (RAD54L) (C-term) Rabbit Polyclonal Antibody

Product data:

Product Type:	Primary Antibodies
Applications:	FC, IHC, WB
Recommended Dilution:	ELISA: 1/1000. Western Blot: 1/100-1/500. Flow Cytometry: 1/10-1/50.
Reactivity:	Human
Host:	Rabbit
Isotype:	Ig
Clonality:	Polyclonal
Immunogen:	KLH conjugated synthetic peptide between 641-671 amino acids from the C-terminal region of Human RAD54
Specificity:	This antibody recognizes Human RAD54L (C-term).
Formulation:	PBS State: Aff - Purified State: Liquid purified Ig fraction Preservative: 0.09% Sodium Azide
Concentration:	lot specific
Purification:	Affinity Chromatography on Protein A
Conjugation:	Unconjugated
Storage:	Store undiluted at 2-8°C for one month or (in aliquots) at -20°C for longer. Avoid repeated freezing and thawing.
Stability:	Shelf life: one year from despatch.
Gene Name:	RAD54-like (<i>S. cerevisiae</i>)
Database Link:	Entrez Gene 8438 Human Q92698



[View online »](#)

Background:

The protein encoded by this gene belongs to the DEAD-like helicase superfamily, and shares similarity with *Saccharomyces cerevisiae* Rad54, a protein known to be involved in the homologous recombination and repair of DNA. This protein has been shown to play a role in homologous recombination related repair of DNA double-strand breaks. The binding of this protein to double-strand DNA induces a DNA topological change, which is thought to facilitate homologous DNA pairing, and stimulate DNA recombination. Alternative splicing results in multiple transcript variants encoding the same protein.

Synonyms:

RAD54A, RAD54 homolog, hRAD54, hHR54

Note:

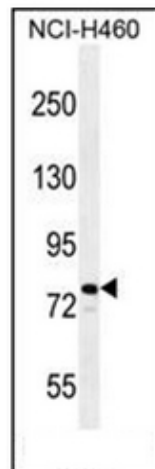
Molecular Weight: 84352 Da

Protein Families:

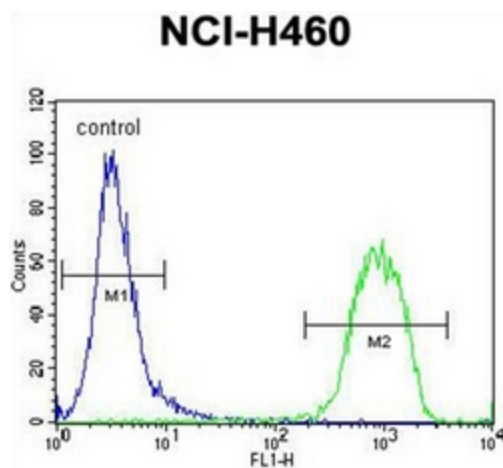
Druggable Genome, Stem cell - Pluripotency

Protein Pathways:

Homologous recombination

Product images:

Western blot analysis of RAD54L Antibody (C-term) in NCI-H460 cell line lysates (35ug/lane). This demonstrates the RAD54 antibody detected the RAD54 protein (arrow)



Flow cytometric analysis of NCI-H460 cells using RAD54L Antibody (C-term) (right histogram) compared to a negative control cell (left histogram). FITC-conjugated goat-anti-rabbit secondary antibodies were used for the analysis.