

Product datasheet for **AP53564PU-N**

RAD52 (C-term) Rabbit Polyclonal Antibody

Product data:

Product Type:	Primary Antibodies
Applications:	WB
Recommended Dilution:	ELISA: 1/1000. Western Blot: 1/100-1/500.
Reactivity:	Human
Host:	Rabbit
Isotype:	Ig
Clonality:	Polyclonal
Immunogen:	KLH conjugated synthetic peptide between 386-416 amino acids from the C-terminal region of Human RAD52
Specificity:	This antibody recognizes Human RAD52 (C-term).
Formulation:	PBS State: Aff - Purified State: Liquid purified Ig fraction Preservative: 0.09% Sodium Azide
Concentration:	lot specific
Purification:	Affinity Chromatography on Protein A
Conjugation:	Unconjugated
Storage:	Store undiluted at 2-8°C for one month or (in aliquots) at -20°C for longer. Avoid repeated freezing and thawing.
Stability:	Shelf life: one year from despatch.
Gene Name:	RAD52 homolog, DNA repair protein
Database Link:	Entrez Gene 5893 Human P43351



[View online »](#)

Background:

The protein encoded by this gene shares similarity with *Saccharomyces cerevisiae* Rad52, a protein important for DNA double-strand break repair and homologous recombination. This gene product was shown to bind single-stranded DNA ends, and mediate the DNA-DNA interaction necessary for the annealing of complementary DNA strands. It was also found to interact with DNA recombination protein RAD51, which suggested its role in RAD51 related DNA recombination and repair

Synonyms:

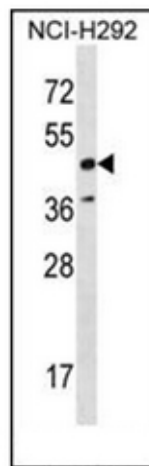
RAD52

Note:**Molecular Weight:** 46169 Da**Protein Families:**

Druggable Genome

Protein Pathways:

Homologous recombination

Product images:

Western blot analysis of RAD52 Antibody (C-term) in NCI-H292 cell line lysates (35ug/lane). This demonstrates the RAD52 antibody detected the RAD52 protein (arrow).