

Product datasheet for **AP53560PU-N**

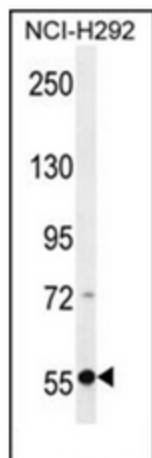
RAD26L (ERCC6L2) (Center) Rabbit Polyclonal Antibody

Product data:

Product Type:	Primary Antibodies
Applications:	WB
Recommended Dilution:	ELISA: 1/1000. Western Blot: 1/100-1/500.
Reactivity:	Human
Host:	Rabbit
Isotype:	Ig
Clonality:	Polyclonal
Immunogen:	KLH conjugated synthetic peptide between 233-263 amino acids from the Central region of human RAD26L
Specificity:	This antibody recognizes Human RAD26L (Center).
Formulation:	PBS State: Aff - Purified State: Liquid purified Ig fraction Preservative: 0.09% Sodium Azide
Concentration:	lot specific
Purification:	Affinity Chromatography on Protein A
Conjugation:	Unconjugated
Storage:	Store undiluted at 2-8°C for one month or (in aliquots) at -20°C for longer. Avoid repeated freezing and thawing.
Stability:	Shelf life: one year from despatch.
Gene Name:	ERCC excision repair 6 like 2
Database Link:	Entrez Gene 375748 Human Q5T890
Synonyms:	C9orf102, LOC375748
Note:	Molecular Weight: 60kd Isoform 2. 81094 Da



[View online »](#)

Product images:

Western blot analysis of RAD26L Antibody (Center) in NCI-H292 cell line lysates (35ug/lane). This demonstrates the RAD26 antibody detected the RAD26 protein (arrow).