

## Product datasheet for **AP53557PU-N**

### **RAD1 (Center) Rabbit Polyclonal Antibody**

#### **Product data:**

Product Type:	Primary Antibodies
Applications:	WB
Recommended Dilution:	<b>ELISA:</b> 1/1000. <b>Western Blot:</b> 1/1000.
Reactivity:	Human
Host:	Rabbit
Isotype:	Ig
Clonality:	Polyclonal
Immunogen:	KLH conjugated synthetic peptide between 118-146 amino acids from the Central region of Human RAD1.
Specificity:	This antibody recognizes Human RAD1 (Center).
Formulation:	PBS State: Aff - Purified State: Liquid purified Ig fraction Preservative: 0.09% Sodium Azide
Concentration:	lot specific
Purification:	Affinity Chromatography on Protein A
Conjugation:	Unconjugated
Storage:	Store undiluted at 2-8°C for one month or (in aliquots) at -20°C for longer. Avoid repeated freezing and thawing.
Stability:	Shelf life: one year from despatch.
Gene Name:	RAD1 checkpoint DNA exonuclease
Database Link:	<a href="#">Entrez Gene 5810 Human</a> <a href="#">O60671</a>



[View online »](#)

**Background:**

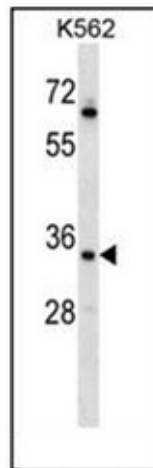
This gene encodes a component of a heterotrimeric cell cycle checkpoint complex, known as the 9-1-1 complex, that is activated to stop cell cycle progression in response to DNA damage or incomplete DNA replication. The 9-1-1 complex is recruited by RAD17 to affected sites where it may attract specialized DNA polymerases and other DNA repair effectors. Alternatively spliced transcript variants of this gene have been described. [provided by RefSeq].

**Synonyms:**

REC1

**Note:****Molecular Weight:** 31827 Da**Protein Families:**

Druggable Genome

**Product images:**

Western blot analysis of RAD1 Antibody in K562 cell line lysates (35ug/lane). This demonstrates the RAD1 antibody detected the RAD1 protein (arrow).