

## Product datasheet for **AP53550PU-N**

### **RAB41 (C-term) Rabbit Polyclonal Antibody**

#### **Product data:**

Product Type:	Primary Antibodies
Applications:	WB
Recommended Dilution:	<b>ELISA:</b> 1/1000. <b>Western Blot:</b> 1/100-1/500.
Reactivity:	Human
Host:	Rabbit
Isotype:	Ig
Clonality:	Polyclonal
Immunogen:	KLH conjugated synthetic peptide between 136-165 amino acids from the C-terminal region of Human RAB41.
Specificity:	This antibody recognizes Human RAB41 (C-term).
Formulation:	PBS State: Aff - Purified State: Liquid purified Ig fraction Preservative: 0.09% Sodium Azide
Concentration:	lot specific
Purification:	Affinity Chromatography on Protein A
Conjugation:	Unconjugated
Storage:	Store undiluted at 2-8°C for one month or (in aliquots) at -20°C for longer. Avoid repeated freezing and thawing.
Stability:	Shelf life: one year from despatch.
Gene Name:	RAB41, member RAS oncogene family
Database Link:	<a href="#">Entrez Gene 347517 Human Q5JT25</a>



[View online »](#)

**Background:**

This gene encodes a small GTP-binding protein that belongs to the largest family within the Ras superfamily. These proteins function as regulators of membrane trafficking. They cycle between inactive GDP-bound and activated GTP-bound states, which is controlled by GTP hydrolysis-activating proteins (GAPs). This family member can be activated by the GAP protein RN-Tre, and it is localized to the Golgi complex.

**Synonyms:**

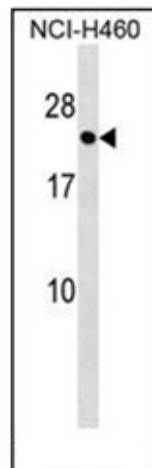
Rab-41

**Note:**

**Molecular Weight:** 25038 Da

**Protein Families:**

Druggable Genome

**Product images:**

Western blot analysis of RAB41 Antibody (C-term) in NCI-H460 cell line lysates (35ug/lane). This demonstrates the RAB41 antibody detected the RAB41 protein (arrow).