

## Product datasheet for **AP53549PU-N**

### **RAB40AL (N-term) Rabbit Polyclonal Antibody**

#### Product data:

<b>Product Type:</b>	Primary Antibodies
<b>Applications:</b>	IHC, WB
<b>Recommended Dilution:</b>	<b>ELISA:</b> 1/1000. <b>Western Blot:</b> 1/100-1/500. <b>Immunohistochemistry on Paraffin Sections:</b> 1/10-1/50.
<b>Reactivity:</b>	Human
<b>Host:</b>	Rabbit
<b>Isotype:</b>	Ig
<b>Clonality:</b>	Polyclonal
<b>Immunogen:</b>	KLH conjugated synthetic peptide between 14-44 amino acids from the N-terminal region of Human RAB40AL.
<b>Specificity:</b>	This antibody recognizes Human RAB40AL (N-term).
<b>Formulation:</b>	PBS State: Aff - Purified State: Liquid purified Ig fraction Preservative: 0.09% Sodium Azide
<b>Concentration:</b>	lot specific
<b>Purification:</b>	Affinity Chromatography on Protein A
<b>Conjugation:</b>	Unconjugated
<b>Storage:</b>	Store undiluted at 2-8°C for one month or (in aliquots) at -20°C for longer. Avoid repeated freezing and thawing.
<b>Stability:</b>	Shelf life: one year from despatch.
<b>Gene Name:</b>	RAB40A, member RAS oncogene family-like



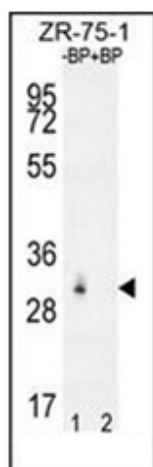
**Database Link:** [Entrez Gene 282808 Human](#)  
[P0C0E4](#)

**Background:** This gene encodes a member of the Rab40 subfamily of Rab small GTP-binding proteins that contains a C-terminal suppressors of cytokine signaling box. Disruptions in this gene are associated with Duchenne muscular dystrophy.

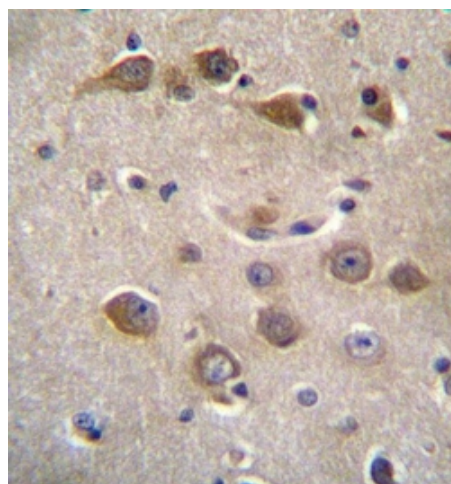
**Synonyms:** Ras-related protein Rab-40A-like, RLGP

**Note:** **Molecular Weight:** 31239 Da

**Product images:**



Western blot analysis of RAB40AL Antibody (N-term) pre-incubated without (Lane 1) and with (Lane 2) blocking peptide in ZR-75-1 cell line lysate. RAB40AL Antibody (N-term) (arrow) was detected using the purified RAB40AL Antibody (N-term) (1/60/250 dilution).



Formalin fixed, paraffin embedded human brain tissue stained with RAB40AL Antibody (N-term) followed by peroxidase conjugation of the secondary antibody and DAB staining