

Product datasheet for **AP53546PU-N**

RAB3IL1 (C-term) Rabbit Polyclonal Antibody

Product data:

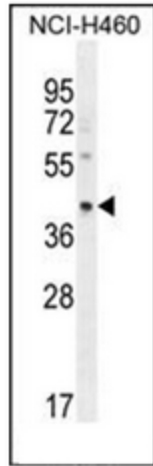
Product Type:	Primary Antibodies
Applications:	FC, WB
Recommended Dilution:	ELISA: 1/1000. Western Blot: 1/100-1/500. Flow Cytometry: 1/10-1/50.
Reactivity:	Human
Host:	Rabbit
Isotype:	Ig
Clonality:	Polyclonal
Immunogen:	KLH conjugated synthetic peptide between 297-325 amino acids from the C-terminal region of Human RAB3IL1
Specificity:	This antibody recognizes Human RAB3IL1 (C-term).
Formulation:	PBS State: Aff - Purified State: Liquid purified Ig fraction Preservative: 0.09% Sodium Azide
Concentration:	lot specific
Purification:	Affinity Chromatography on Protein A
Conjugation:	Unconjugated
Storage:	Store undiluted at 2-8°C for one month or (in aliquots) at -20°C for longer. Avoid repeated freezing and thawing.
Stability:	Shelf life: one year from despatch.
Gene Name:	RAB3A interacting protein like 1
Database Link:	Entrez Gene 5866 Human Q8TBN0
Background:	Guanine nucleotide exchange factor (GEF) for Rab3A, a GTPase that regulates synaptic vesicle exocytosis (By similarity).
Synonyms:	Rabin3-like 1, GRAB



[View online »](#)

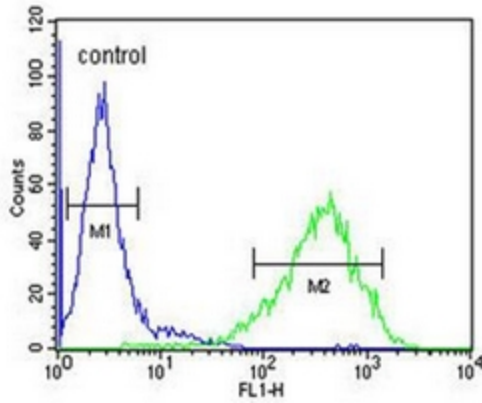
Note: **Molecular Weight:** 42637 Da

Product images:



Western blot analysis of RAB3IL1 Antibody (C-term) in NCI-H460 cell line lysates (35ug/lane). This demonstrates the RAB3IL1 antibody detected the RAB3IL1 protein (arrow).

NCI-H460



Flow cytometric analysis of NCI-H460 cells using RAB3IL1 Antibody (C-term) (right histogram) compared to a negative control cell (left histogram). FITC-conjugated goat-anti-rabbit secondary antibodies were used for the analysis.