

Product datasheet for **AP53543PU-N**

RAB3B (C-term) Rabbit Polyclonal Antibody

Product data:

Product Type:	Primary Antibodies
Applications:	WB
Recommended Dilution:	ELISA: 1/1000. Western Blot: 1/100-1/500.
Reactivity:	Human
Host:	Rabbit
Isotype:	Ig
Clonality:	Polyclonal
Immunogen:	KLH conjugated synthetic peptide between 169-196 amino acids from the C-terminal region of Human RAB3B.
Specificity:	This antibody recognizes Human RAB3B (C-term).
Formulation:	PBS State: Aff - Purified State: Liquid purified Ig fraction Preservative: 0.09% Sodium Azide
Concentration:	lot specific
Purification:	Affinity Chromatography on Protein A
Conjugation:	Unconjugated
Storage:	Store undiluted at 2-8°C for one month or (in aliquots) at -20°C for longer. Avoid repeated freezing and thawing.
Stability:	Shelf life: one year from despatch.
Gene Name:	RAB3B, member RAS oncogene family
Database Link:	Entrez Gene 5865 Human P20337
Background:	Protein transport. It probably is involved in vesicular traffic (By similarity).
Synonyms:	Rab-3B
Note:	Molecular Weight: 24758 Da

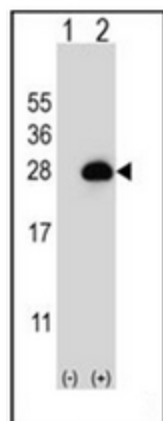


[View online »](#)

Protein Families: Druggable Genome

Protein Pathways: Tight junction

Product images:



Western blot analysis of RAB3B (arrow) using RAB3B Antibody (C-term). 293 cell lysates (2 ug/lane) either nontransfected (Lane 1) or transiently transfected (Lane 2) with the RAB3B gene.