

Product datasheet for **AP53542PU-N**

RAB3A (N-term) Rabbit Polyclonal Antibody

Product data:

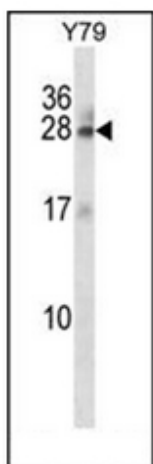
Product Type:	Primary Antibodies
Applications:	WB
Recommended Dilution:	ELISA: 1/1000. Western Blot: 1/100-1/500.
Reactivity:	Human
Host:	Rabbit
Isotype:	Ig
Clonality:	Polyclonal
Immunogen:	KLH conjugated synthetic peptide between 1-30 amino acids from the N-terminal region of Human RAB3A
Specificity:	This antibody recognizes Human RABA (N-term).
Formulation:	PBS containing 0.09% (W/V) Sodium Azide as preservative State: Aff - Purified State: Liquid purified Ig fraction
Concentration:	lot specific
Purification:	Affinity Chromatography on Protein A
Conjugation:	Unconjugated
Storage:	Store undiluted at 2-8°C for one month or (in aliquots) at -20°C for longer. Avoid repeated freezing and thawing.
Stability:	Shelf life: one year from despatch.
Gene Name:	RAB3A, member RAS oncogene family
Database Link:	Entrez Gene 5864 Human P20336
Background:	RAB3A is involved in exocytosis by regulating a late step in synaptic vesicle fusion. Could play a role in neurotransmitter release by regulating membrane flow in the nerve terminal.
Synonyms:	Rab-3A
Note:	Molecular Weight: 24984 Da



[View online >](#)

Protein Families: Druggable Genome

Product images:



Western blot analysis of RAB3A Antibody (N-term) in Y79 cell line lysates (35ug/lane). This demonstrates the RAB3A antibody detected the RAB3A protein (arrow).