

Product datasheet for **AP53541PU-N**

RAB27B (Center) Rabbit Polyclonal Antibody

Product data:

Product Type:	Primary Antibodies
Applications:	IHC, WB
Recommended Dilution:	ELISA: 1/1000. Western Blot: 1/1000. Immunohistochemistry on Paraffin Sections: 1/10-1/50.
Reactivity:	Human
Host:	Rabbit
Isotype:	Ig
Clonality:	Polyclonal
Immunogen:	KLH conjugated synthetic peptide between 128-158 amino acids from the Central region of Human RAB27B.
Specificity:	This antibody recognizes Human RAB27B (Center).
Formulation:	PBS State: Aff - Purified State: Liquid purified Ig fraction Preservative: 0.09% Sodium Azide
Concentration:	lot specific
Purification:	Affinity Chromatography on Protein A
Conjugation:	Unconjugated
Storage:	Store undiluted at 2-8°C for one month or (in aliquots) at -20°C for longer. Avoid repeated freezing and thawing.
Stability:	Shelf life: one year from despatch.
Gene Name:	RAB27B, member RAS oncogene family
Database Link:	Entrez Gene 5874 Human O00194
Background:	Members of the Rab protein family, including RAB27B, are prenylated, membrane-bound proteins involved in vesicular fusion and trafficking (Chen et al., 1997 [PubMed 9066979]). [supplied by OMIM].



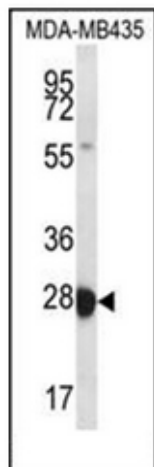
[View online »](#)

Synonyms: Rab-27B, C25KG

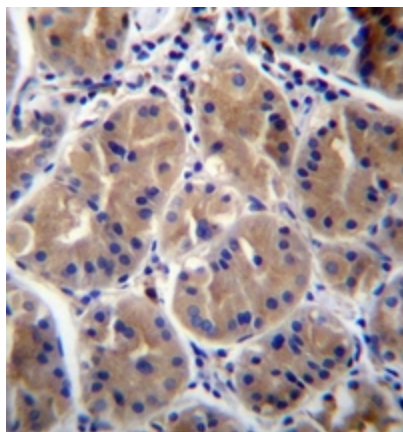
Note: **Molecular Weight:** 24608 Da

Protein Families: Druggable Genome

Product images:



Western blot analysis of RAB27B Antibody in MDA-MB435 cell line lysates (35ug/lane). This demonstrates the RAB27B antibody detected the RAB27B protein (arrow).



Formalin fixed and paraffin embedded human stomach tissue reacted with RAB27B Antibody followed by peroxidase conjugation of the secondary antibody and DAB staining.