

Product datasheet for **AP53540PU-N**

RAB25 (Center) Rabbit Polyclonal Antibody

Product data:

Product Type:	Primary Antibodies
Applications:	WB
Recommended Dilution:	ELISA: 1/1000. Western Blot: 1/100-1/500.
Reactivity:	Human, Mouse
Host:	Rabbit
Isotype:	Ig
Clonality:	Polyclonal
Immunogen:	KLH conjugated synthetic peptide between 112-141 amino acids from the Central region of Human RAB25
Specificity:	This antibody recognizes Mouse RAB25 (Center).
Formulation:	PBS State: Aff - Purified State: Liquid purified Ig fraction Preservative: 0.09% Sodium Azide
Concentration:	lot specific
Purification:	Affinity Chromatography on Protein A
Conjugation:	Unconjugated
Storage:	Store undiluted at 2-8°C for one month or (in aliquots) at -20°C for longer. Avoid repeated freezing and thawing.
Stability:	Shelf life: one year from despatch.
Gene Name:	RAB25, member RAS oncogene family
Database Link:	Entrez Gene 53868 Mouse Entrez Gene 57111 Human P57735
Background:	RAB proteins, such as RAB25, are members of the RAS superfamily of small GTPases that are involved in membrane trafficking. Members of the RAB11 subfamily, including RAB25, control the return of internalized membrane-associated moieties to the cell surface (Caswell et al., 2007 [PubMed 17925226]). [supplied by OMIM].



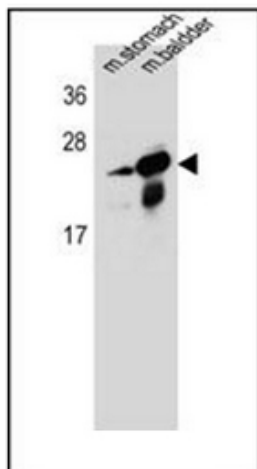
[View online »](#)

Synonyms: Rab-25, CATX8, CATX-8

Note: **Molecular Weight:** 23496 Da

Protein Families: Druggable Genome, Transcription Factors

Product images:



Western blot analysis of RAB25 Antibody (Center) in mouse stomach, bladder tissue lysates (35ug/lane). This demonstrates the RAB25 antibody detected the RAB25 protein (arrow).