

Product datasheet for **AP53538PU-N**

RAB15 (Center) Rabbit Polyclonal Antibody

Product data:

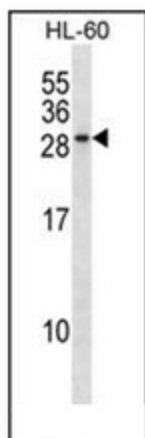
Product Type:	Primary Antibodies
Applications:	WB
Recommended Dilution:	ELISA: 1/1000. Western Blot: 1/100-1/500.
Reactivity:	Human
Host:	Rabbit
Isotype:	Ig
Clonality:	Polyclonal
Immunogen:	KLH conjugated synthetic peptide between 104-133 amino acids from the Central region of Human RAB15
Specificity:	This antibody recognizes Human RAB15 (Center).
Formulation:	PBS State: Aff - Purified State: Liquid purified Ig fraction Preservative: 0.09% Sodium Azide
Concentration:	lot specific
Purification:	Affinity Chromatography on Protein A
Conjugation:	Unconjugated
Storage:	Store undiluted at 2-8°C for one month or (in aliquots) at -20°C for longer. Avoid repeated freezing and thawing.
Stability:	Shelf life: one year from despatch.
Gene Name:	RAB15, member RAS oncogene family
Database Link:	Entrez Gene 376267 Human P59190
Background:	RAB15 may act in concert with RAB3A in regulating aspects of synaptic vesicle membrane flow within the nerve terminal (By similarity).
Synonyms:	Rab-15



[View online »](#)

Note: **Molecular Weight:** 24391 Da

Product images:



Western blot analysis of RAB15 Antibody (Center) in HL-60 cell line lysates (35ug/lane). This demonstrates the RAB15 antibody detected the RAB15 protein (arrow).