

Product datasheet for **AP53537PU-N**

RAB12 (N-term) Rabbit Polyclonal Antibody

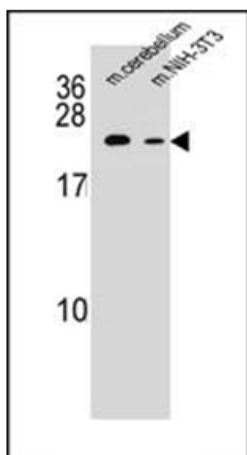
Product data:

Product Type:	Primary Antibodies
Applications:	WB
Recommended Dilution:	ELISA: 1/1000. Western Blot: 1/100-1/500.
Reactivity:	Human, Mouse
Host:	Rabbit
Isotype:	Ig
Clonality:	Polyclonal
Immunogen:	KLH conjugated synthetic peptide between 70-100 amino acids from the N-terminal region of human RAB12
Specificity:	This antibody recognizes Human and Mouse RAB12 (N-term).
Formulation:	PBS State: Aff - Purified State: Liquid purified Ig fraction Preservative: 0.09% Sodium Azide
Concentration:	lot specific
Purification:	Affinity Chromatography on Proten A
Conjugation:	Unconjugated
Storage:	Store undiluted at 2-8°C for one month or (in aliquots) at -20°C for longer. Avoid repeated freezing and thawing.
Stability:	Shelf life: one year from despatch.
Gene Name:	RAB12, member RAS oncogene family
Database Link:	Entrez Gene 201475 Human Q6IQ22
Synonyms:	Ras-related protein Rab-12
Note:	Molecular Weight: 27248 Da



[View online »](#)

Product images:



Western blot analysis of RAB12 Antibody (N-term) in mouse cerebellum tissue and mouse NIH-3T3 cell line lysates (35ug/lane). This demonstrates the RAB12 antibody detected the RAB12 protein (arrow).